

anti- ITPKC antibody

Product Information

| | |
|---------------|---|
| Catalog No.: | FNab04424 |
| Size: | 100µg |
| Form: | liquid |
| Purification: | Immunogen affinity purified |
| Purity: | ≥95% as determined by SDS-PAGE |
| Host: | Rabbit |
| Clonality: | polyclonal |
| Clone ID: | None |
| IsoType: | IgG |
| Storage: | PBS with 0.02% sodium azide and 50% glycerol pH 7.3, -20°C for 12 months (Avoid repeated freeze / thaw cycles.) |

Background

Can phosphorylate inositol 2,4,5-triphosphate to inositol 2,4,5,6-tetraphosphate.

Immunogen information

| | |
|--------------|---|
| Immunogen: | inositol 1,4,5-trisphosphate 3-kinase C |
| Synonyms: | IP3KC |
| Observed MW: | 100-105 kDa |
| UniprotID : | Q96DU7 |

Application

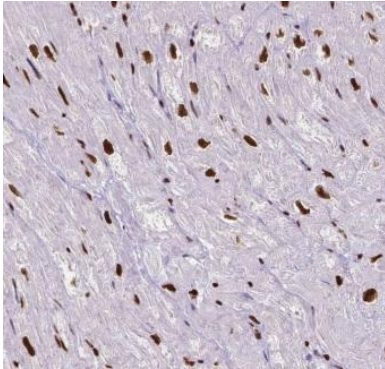
| | |
|-----------------------|---|
| Reactivity: | Human |
| Tested Application: | ELISA, WB, IF, IHC, IP |
| Recommended dilution: | WB: 1:500-1:2000; IP: 1:200-1:1000; IHC: 1:20-1:200; IF: 1:20-1:200 |
| Image: | |

Wuhan Fine Biotech Co., Ltd.

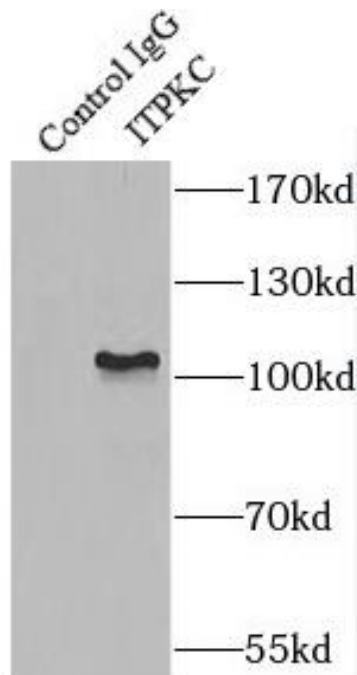
B9 Bld, High-Tech Medical Devices Park, No. 818 GaoxinAve. East Lake High-Tech Development Zone. Wuhan, Hubei, China(430206)

Tel : (0086)027-87384275

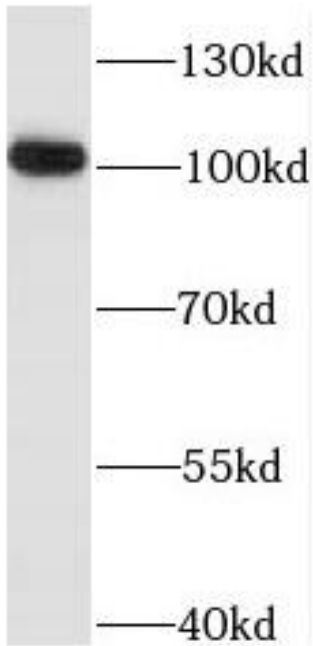
Fax: (0086)027-87800889 www.fn-test.com



Immunohistochemistry of paraffin-embedded human skeletal muscle tissue slide using FNab04424(ITPKC Antibody) at dilution of 1:50



IP Result of anti-ITPKC (IP:FNab04424, 4ug; Detection:FNab04424 1:400) with HepG2 cells lysate 1600ug.



human heart tissue were subjected to SDS PAGE followed by western blot with FNab04424(ITPKC antibody) at dilution of 1:400