

anti- ITGB1BP2 antibody

Product Information

Catalog No.:	FNab04412
Size:	100µg
Form:	liquid
Purification:	Immunogen affinity purified
Purity:	≥95% as determined by SDS-PAGE
Host:	Rabbit
Clonality:	polyclonal
IsoType:	IgG
Storage:	PBS with 0.02% sodium azide and 50% glycerol pH 7.3, -20°C for 12 months (Avoid repeated freeze / thaw cycles.)

Background

May play a role during maturation and/or organization of muscles cells.

Immunogen information

Immunogen:	integrin beta 1 binding protein(melusin) 2
Synonyms:	CHORDC3, ITGB1BP, ITGB1BP2, MELUSIN, MSTP015
Observed MW:	40-45kd
Uniprot ID :	Q9UKP3

Application

Reactivity:	Human, Mouse, Rat
Tested Application:	ELISA, WB, IF
Recommended dilution:	WB: 1:500-1:2000; IF: 1:20-1:200
Image:	

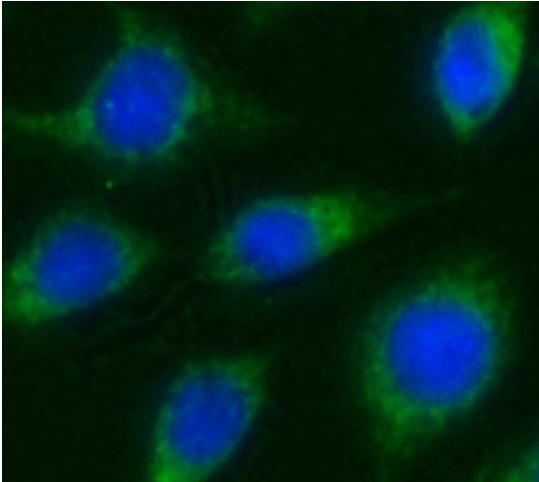
Wuhan Fine Biotech Co., Ltd.

B9 Bld, High-Tech Medical Devices Park, No. 818 Gaoxin Ave. East Lake High-Tech Development Zone. Wuhan, Hubei, China(430206)

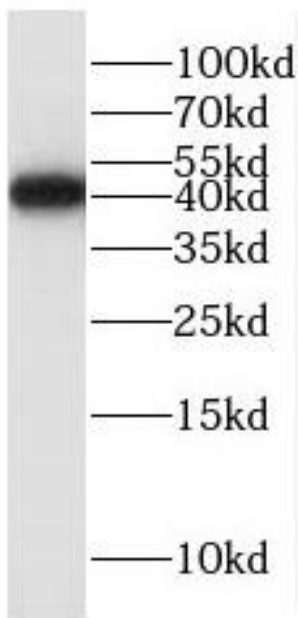
Tel : (0086)027-87384275

Fax: (0086)027-87800889

www.fn-test.com



Immunofluorescent analysis of HepG2 using FNab04412 (ITGB1BP2 antibody) at dilution of 1:25 and FITC-Goat anti-Rabbit IgG



human heart tissue were subjected to SDS PAGE followed by western blot with FNab04412(ITGB1BP2 antibody) at dilution of 1:600