

anti- INTS8 antibody

Product Information

| | |
|---------------|---|
| Catalog No.: | FNab04365 |
| Size: | 100µg |
| Form: | liquid |
| Purification: | Immunogen affinity purified |
| Purity: | ≥95% as determined by SDS-PAGE |
| Host: | Rabbit |
| Clonality: | polyclonal |
| Clone ID: | None |
| IsoType: | IgG |
| Storage: | PBS with 0.02% sodium azide and 50% glycerol pH 7.3, -20°C for 12 months (Avoid repeated freeze / thaw cycles.) |

Background

Component of the Integrator complex, a complex involved in the small nuclear RNAs(snRNA) U1 and U2 transcription and in their 3'-box-dependent processing. The Integrator complex is associated with the C-terminal domain(CTD) of RNA polymerase II largest subunit(POLR2A) and is recruited to the U1 and U2 snRNAs genes.

Immunogen information

| | |
|--------------|--|
| Immunogen: | integrator complex subunit 8 |
| Synonyms: | C8orf52, INT8, integrator complex subunit 8, INTS8, Protein kaonashi 1 |
| Observed MW: | 113 kDa |
| Uniprot ID : | Q75QN2 |

Application

| | |
|-----------------------|---|
| Reactivity: | Human |
| Tested Application: | ELISA, WB, IHC, IF |
| Recommended dilution: | WB: 1:200-1:1000; IF: 1:10-1:100; IHC: 1:20-1:200 |

Wuhan Fine Biotech Co., Ltd.

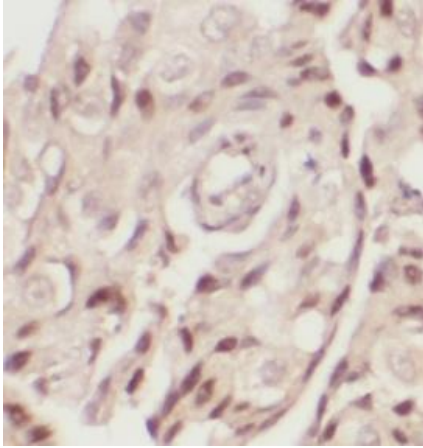
B9 Bld, High-Tech Medical Devices Park, No. 818 Gaoxin Ave. East Lake High-Tech Development Zone. Wuhan, Hubei, China(430206)

Tel : (0086)027-87384275

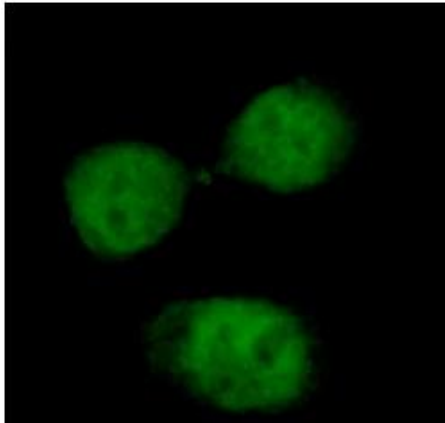
Fax: (0086)027-87800889

www.fn-test.com

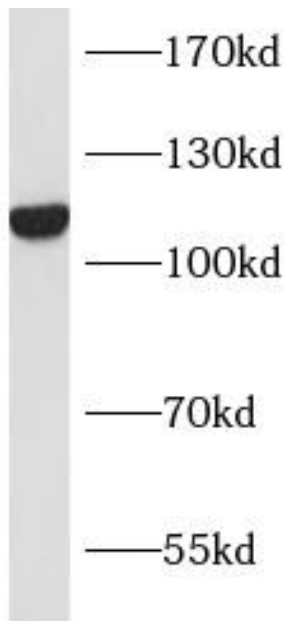
Image:



Immunohistochemistry of paraffin-embedded human breast cancer using FNab04365(INTS8 antibody) at dilution of 1:100



Immunofluorescent analysis of HeLa cells using FNab04365(INTS8 antibody) at dilution of 1:25



MCF7 cells were subjected to SDS PAGE followed by western blot with FNab04365(INTS8 antibody) at dilution of 1:300