

anti- Insulin antibody

Product Information

Catalog No.:	FNab04339
Size:	100µg
Form:	liquid
Purification:	Protein A+G purification
Purity:	≥95% as determined by SDS-PAGE
Host:	Mouse
Clonality:	monoclonal
Clone ID:	0H2
IsoType:	IgG2a
Storage:	PBS with 0.02% sodium azide and 50% glycerol pH 7.3, -20°C for 12 months (Avoid repeated freeze / thaw cycles.)

Background

Insulin is a peptide hormone, produced by beta cells of the pancreas, and is central to regulating carbohydrate and fat metabolism in the body. It participates in glucose utilization, protein synthesis and in the formation and storage of neutral lipids. Insulin is synthesized as a precursor molecule, proinsulin, which is processed prior to secretion. A- and B-peptides are joined together by a disulfide bond to form insulin, while the central portion of the precursor molecule is cleaved and released as the C-peptide. Defects in insulin results in type 1 diabetes mellitus. Insulin may also exist 36 kDa form corresponding to the hexameric insulin form.

Immunogen information

Immunogen:	insulin
Synonyms:	ILPR, INS, insulin, IRDN
Observed MW:	None
Uniprot ID :	P01308

Application

Reactivity:	Human, Mouse
-------------	--------------

Wuhan Fine Biotech Co., Ltd.

B9 Bld, High-Tech Medical Devices Park, No. 818 Gaoxin Ave. East Lake High-Tech Development Zone. Wuhan, Hubei, China(430206)

Tel : (0086)027-87384275

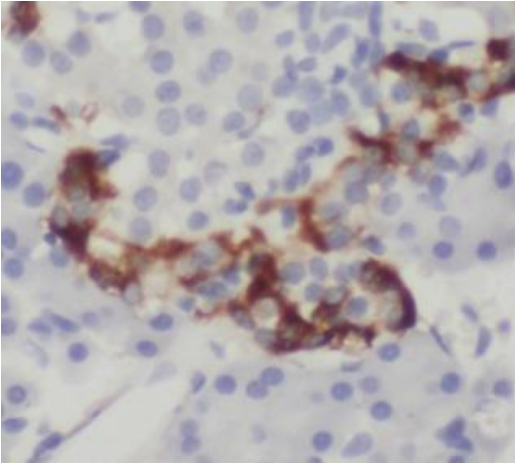
Fax: (0086)027-87800889

www.fn-test.com

Tested Application: ELISA, IHC

Recommended dilution:IHC: 1:500-1:5000

Image:



Immunohistochemistry of paraffin-embedded human pancreas tissue slide using FNab04339(Insulin Antibody) at dilution of 1:5000