

## anti- Insulin antibody

### Product Information

Catalog No.:	FNab04338
Size:	100µg
Form:	liquid
Purification:	Immunogen affinity purified
Purity:	≥95% as determined by SDS-PAGE
Host:	Rabbit
Clonality:	polyclonal
Clone ID:	None
IsoType:	IgG
Storage:	PBS with 0.02% sodium azide and 50% glycerol pH 7.3, -20°C for 12 months (Avoid repeated freeze / thaw cycles.)

### Background

Insulin is a peptide hormone, produced by beta cells of the pancreas, and is central to regulating carbohydrate and fat metabolism in the body. It participates in glucose utilization, protein synthesis and in the formation and storage of neutral lipids. Insulin is synthesized as a precursor molecule, proinsulin, which is processed prior to secretion. A-and B-peptides are joined together by a disulfide bond to form insulin, while the central portion of the precursor molecule is cleaved and released as the C-peptide. Defects in insulin results in type 1 diabetes mellitus. Insulin may also exist 36 kDa form corresponding to the hexameric insulin form.

### Immunogen information

Immunogen:	insulin
Synonyms:	ILPR, INS, insulin, IRDN
Observed MW:	36 kDa
Uniprot ID :	P01308

### Application

Reactivity:	Human, Mouse, Rat
-------------	-------------------

### Wuhan Fine Biotech Co., Ltd.

B9 Bld, High-Tech Medical Devices Park, No. 818 Gaoxin Ave. East Lake High-Tech Development Zone. Wuhan, Hubei, China(430206)

Tel : (0086)027-87384275

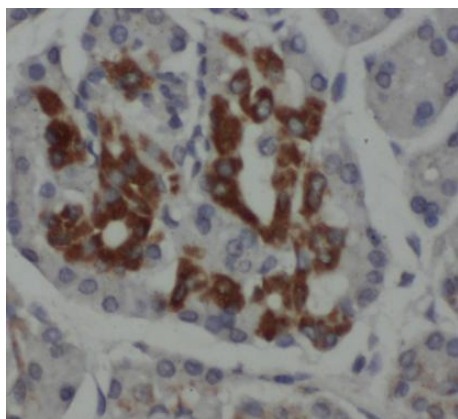
Fax: (0086)027-87800889

[www.fn-test.com](http://www.fn-test.com)

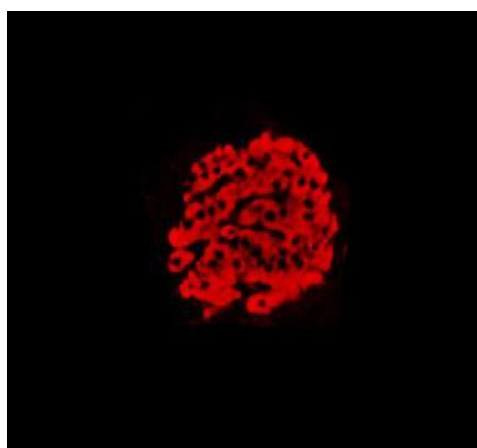
Tested Application: ELISA, WB, IHC, IF

Recommended dilution: WB: 1:500-1:5000; IHC: 1:500-1:1000; IF: 1:100-1:1000

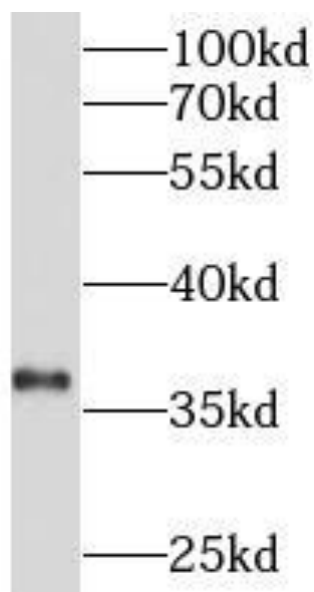
Image:



Immunohistochemistry of paraffin-embedded human pancreas using FNab04338(INS antibody) at dilution of 1:50



IF result of Insulin antibody (FNab04338, 1:500) with Rat pancreas.



mouse pancreas tissue were subjected to SDS  
PAGE followed by western blot with  
FNab04338(INS antibody) at dilution of 1:1000