

anti- IMMP2L antibody

Product Information

Catalog No.:	FNab04294
Size:	100µg
Form:	liquid
Purification:	Immunogen affinity purified
Purity:	≥95% as determined by SDS-PAGE
Host:	Rabbit
Clonality:	polyclonal
Clone ID:	None
IsoType:	IgG
Storage:	PBS with 0.02% sodium azide and 50% glycerol pH 7.3, -20°C for 12 months (Avoid repeated freeze / thaw cycles.)

Background

Catalyzes the removal of transit peptides required for the targeting of proteins from the mitochondrial matrix, across the inner membrane, into the inter-membrane space. Known to process the nuclear encoded protein DIABLO.

Immunogen information

Immunogen:	IMP2 inner mitochondrial membrane peptidase-like(S. cerevisiae)
Synonyms:	None
Observed MW:	12 kDa
UniprotID :	Q96T52

Application

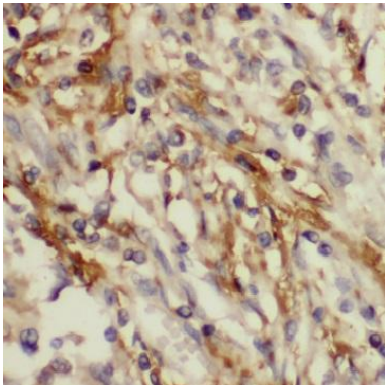
Reactivity:	Human, Mouse, Rat
Tested Application:	ELISA, WB, IHC
Recommended dilution:	WB: 1:500-1:2000; IHC: 1:20-1:200
Image:	

Wuhan Fine Biotech Co., Ltd.

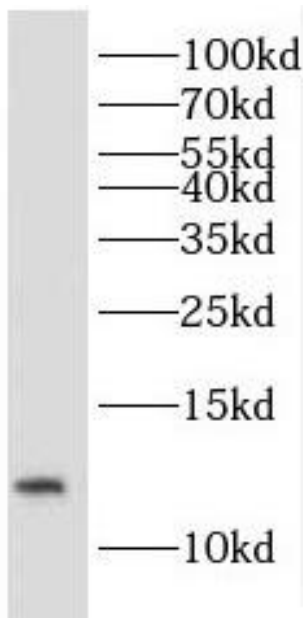
B9 Bld, High-Tech Medical Devices Park, No. 818 GaoxinAve.East Lake High-Tech Development Zone.Wuhan, Hubei, China(430206)

Tel : (0086)027-87384275

Fax: (0086)027-87800889 www.fn-test.com



Immunohistochemistry of paraffin-embedded human lung cancer using FNab04294(IMMP2L antibody) at dilution of 1:100



human kidney tissue were subjected to SDS PAGE followed by western blot with FNab04294(IMMP2L antibody) at dilution of 1:500