

anti- IGF1R antibody

Product Information

Catalog No.:	FNab04170
Size:	100µg
Form:	liquid
Purification:	Immunogen affinity purified
Purity:	≥95% as determined by SDS-PAGE
Host:	Rabbit
Clonality:	polyclonal
Clone ID:	None
IsoType:	IgG
Storage:	PBS with 0.02% sodium azide and 50% glycerol pH 7.3, -20°C for 12 months (Avoid repeated freeze / thaw cycles.)

Background

IGF1R, also named as CD221, is a receptor tyrosine kinase which mediates actions of insulin-like growth factor 1 (IGF1). IGF1R binds IGF1 with high affinity and IGF2 and insulin (INS) with a lower affinity, the activated IGF1R is involved in cell growth and survival control. It is crucial for tumor transformation and survival of malignant cell. IGF1R is a heterotetrameric receptor, composed of two alpha subunits (130 kDa each) and two beta subunits (~98 kDa each) (PMID: 6279656). Both the alpha and beta subunits are synthesized from a single mRNA precursor. The precursor is then glycosylated, proteolytically cleaved, and crosslinked by cysteine bonds.

Immunogen information

Immunogen:	insulin-like growth factor 1 receptor
Synonyms:	CD221, IGFIR, IGFR, JTK13
Observed MW:	70 kDa,90-100 kDa, 130 kDa
Uniprot ID :	P08069

Application

Wuhan Fine Biotech Co., Ltd.

B9 Bld, High-Tech Medical Devices Park, No. 818 Gaoxin Ave. East Lake High-Tech Development Zone. Wuhan, Hubei, China(430206)

Tel : (0086)027-87384275

Fax: (0086)027-87800889

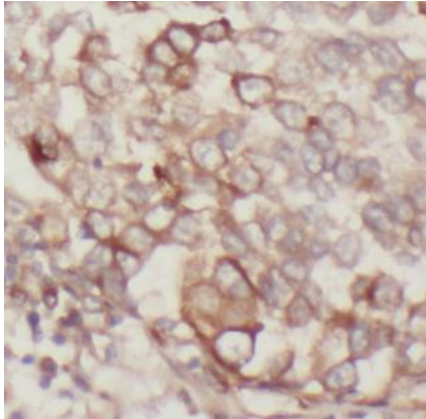
www.fn-test.com

Reactivity: Human, Mouse, Rat

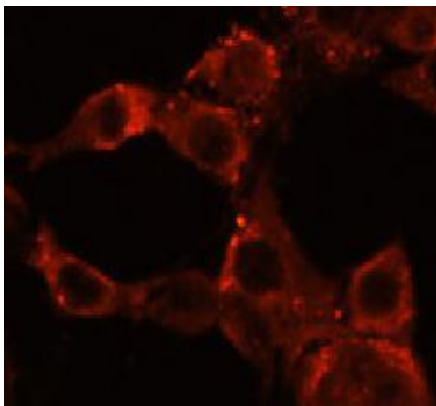
Tested Application: ELISA, WB, IHC, IF

Recommended dilution: WB: 1:500-1:2000; IHC: 1:20-1:200; IF: 1:20-1:200

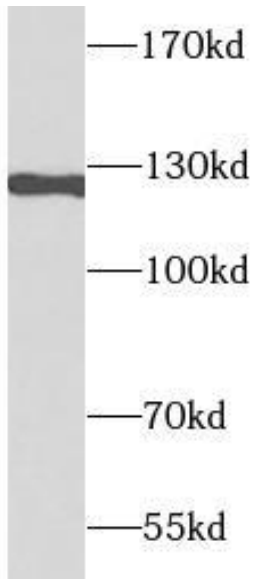
Image:



Immunohistochemistry of paraffin-embedded human lung cancer tissue slide using FNab04170(IGF1R-Specific antibody) at dilution of 1:100



Immunofluorescence analysis of NIH/3T3 cells using FNab04170 (IGF1R-Specific antibody) at dilution of 1:100. Blue: DAPI for nuclear staining.



MCF7 cells were subjected to SDS PAGE followed by western blot with FNab04170(IGF1R-Specific antibody) at dilution of 1:1000