

anti- IFITM2-specific antibody

Product Information

Catalog No.:	FNab04143
Size:	100µg
Form:	liquid
Purification:	Protein A+G purification
Purity:	≥95% as determined by SDS-PAGE
Host:	Mouse
Clonality:	monoclonal
Clone ID:	9C2
IsoType:	IgG1
Storage:	PBS with 0.02% sodium azide and 50% glycerol pH 7.3, -20°C for 12 months (Avoid repeated freeze / thaw cycles.)

Background

IFN-induced antiviral protein which inhibits the entry of viruses to the host cell cytoplasm, permitting endocytosis, but preventing subsequent viral fusion and release of viral contents into the cytosol. Active against multiple viruses, including influenza A virus, SARS coronavirus(SARS-CoV), Marburg virus(MARV), Ebola virus(EBOV), Dengue virus(DNV), West Nile virus(WNV), human immunodeficiency virus type 1(HIV-1) and vesicular stomatitis virus(VSV). Can inhibit: influenza virus hemagglutinin protein-mediated viral entry, MARV and EBOV GP1,2-mediated viral entry, SARS-CoV S protein-mediated viral entry and VSV G protein-mediated viral entry. Induces cell cycle arrest and mediates apoptosis by caspase activation and in p53-independent manner.

Immunogen information

Immunogen:	interferon induced transmembrane protein 2
Synonyms:	DSPA2c, IFITM2
Observed MW:	15 kDa
Uniprot ID :	Q01629

Application

1

Wuhan Fine Biotech Co., Ltd.

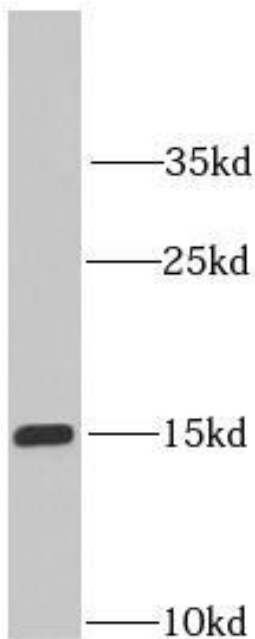
B9 Bld, High-Tech Medical Devices Park, No. 818 Gaoxin Ave. East Lake High-Tech Development Zone. Wuhan, Hubei, China(430206)

Tel : (0086)027-87384275

Fax: (0086)027-87800889

www.fn-test.com

Reactivity: Human
Tested Application: ELISA, WB, FC
Recommended dilution: WB: 1:500 - 1:2000
Image:



HepG2 cells were subjected to SDS PAGE followed by western blot with FNab04143(IFITM2-specific antibody) at dilution of 1:1000