

## anti- IFITM1-Specific antibody

### Product Information

Catalog No.:	FNab04141
Size:	100µg
Form:	liquid
Purification:	Protein A+G purification
Purity:	≥95% as determined by SDS-PAGE
Host:	Mouse
Clonality:	monoclonal
Clone ID:	3C10
IsoType:	IgG1
Storage:	PBS with 0.02% sodium azide and 50% glycerol pH 7.3, -20°C for 12 months (Avoid repeated freeze / thaw cycles.)

### Background

None

### Immunogen information

Immunogen:	interferon induced transmembrane protein 1(9-27)
Synonyms:	None
Observed MW:	14 kDa
UniprotID :	P13164

### Application

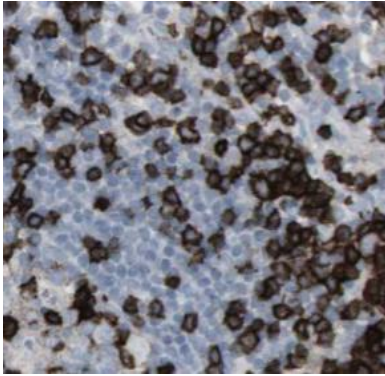
Reactivity:	Human
Tested Application:	ELISA, WB, IHC, IP
Recommended dilution:	WB: 1:5000 - 1:50000; IHC: 1:200 - 1:1000; IP: 1:500 - 1:1000
Image:	

### Wuhan Fine Biotech Co., Ltd.

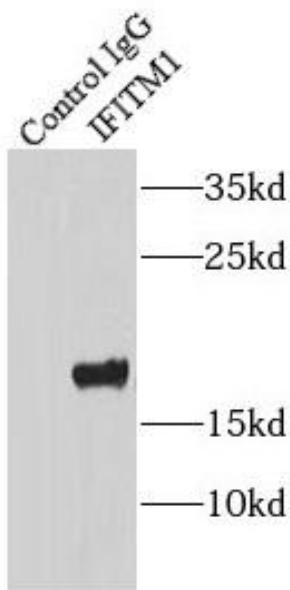
B9 Bld, High-Tech Medical Devices Park, No. 818 GaoxinAve. East Lake High-Tech Development Zone. Wuhan, Hubei, China(430206)

Tel : (0086)027-87384275

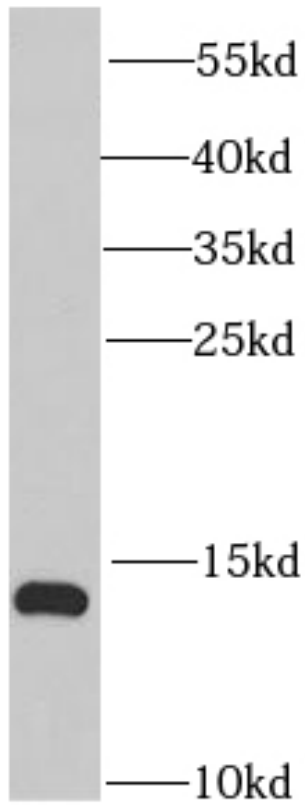
Fax: (0086)027-87800889 [www.fn-test.com](http://www.fn-test.com)



Immunohistochemistry of paraffin-embedded human lymphoma tissue slide using FNab04141(IFITM1-Specific Antibody) at dilution of 1:50 heat mediated antigen retrieved with Tris-EDTA buffer(pH9).



IP Result of anti-IFITM1-Specific (IP:FNab04141, 4ug; Detection:FNab04141 1:500) with HepG2 cells lysate 3600ug.



K-562 cells were subjected to SDS PAGE followed by western blot with FNab04141(IFITM1-Specific Antibody) at dilution of 1:40000