

anti- IFI30 antibody

Product Information

Catalog No.:	FNab04133
Size:	100µg
Form:	liquid
Purification:	Immunogen affinity purified
Purity:	≥95% as determined by SDS-PAGE
Host:	Rabbit
Clonality:	polyclonal
Clone ID:	None
IsoType:	IgG
Storage:	PBS with 0.02% sodium azide and 50% glycerol pH 7.3, -20°C for 12 months (Avoid repeated freeze / thaw cycles.)

Background

Lysosomalthiolreductase that can reduce protein disulfide bonds. May facilitate the complete unfolding of proteins destined for lysosomal degradation. Plays an important role in antigen processing. Facilitates the generation of MHC class II-restricted epitopes from disulfide bond-containing antigen by the endocytic reduction of disulfide bonds (By similarity). Facilitates also MHC class I-restricted recognition of exogenous antigens containing disulfide bonds by CD8+ T-cells or crosspresentation (By similarity).

Immunogen information

Immunogen:	interferon, gamma-inducible protein 30
Synonyms:	GILT, IP30
Observed MW:	29 kDa
UniprotID :	P13284

Application

Reactivity:	Human
Tested Application:	ELISA, WB

Wuhan Fine Biotech Co., Ltd.

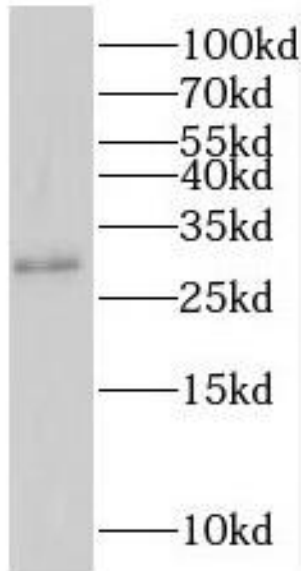
B9 Bld, High-Tech Medical Devices Park, No. 818 Gaoxin Ave. East Lake High-Tech Development Zone. Wuhan, Hubei, China (430206)

Tel : (0086)027-87384275

Fax: (0086)027-87800889 www.fn-test.com

Recommended dilution: WB: 1:500-1:2000

Image:



human colon tissue were subjected to SDS PAGE followed by western blot with FNab04133 (IFI30 antibody) at dilution of 1:400

Wuhan Fine Biotech Co., Ltd.

B9 Bld, High-Tech Medical Devices Park, No. 818 GaoxinAve. East Lake High-Tech Development Zone. Wuhan, Hubei, China(430206)

Tel : (0086)027-87384275

Fax: (0086)027-87800889 www.fn-test.com