

## anti- GRP75 antibody

### Product Information

Catalog No.:	FNab03661
Size:	100µg
Form:	liquid
Purification:	Immunogen affinity purified
Purity:	≥95% as determined by SDS-PAGE
Host:	Rabbit
Clonality:	polyclonal
Clone ID:	None
IsoType:	IgG
Storage:	PBS with 0.02% sodium azide and 50% glycerol pH 7.3, -20°C for 12 months (Avoid repeated freeze / thaw cycles.)

### Background

GRP75(also known as mortalin, HSPA9 or mt-Hsp70) is a constitutively expressed member of the HSPA(HSP70) family of heat-shock proteins. It is located in the mitochondrial matrix and anti-GRP75 is commonly used as the marker for mitochondria. It has been reported that GRP75 is enriched in cancer cells and contributes to carcinogenesis. In addition, decreased expression level of GRP75 has been found in neurodegenerative disorders like Parkinson's disease.

### Immunogen information

Immunogen:	heat shock 70kDa protein 9(mortalin)
Synonyms:	CSA, GRP 75, GRP75, Heat shock 70 kDa protein 9, HSPA9, HSPA9B, Mortalin, MOT, mot 2, MOT2, MTHSP75, PBP74, Peptide binding protein 74
Observed MW:	74 kDa
Uniprot ID :	P38646

### Application

Reactivity:	Human, Mouse, Rat
-------------	-------------------

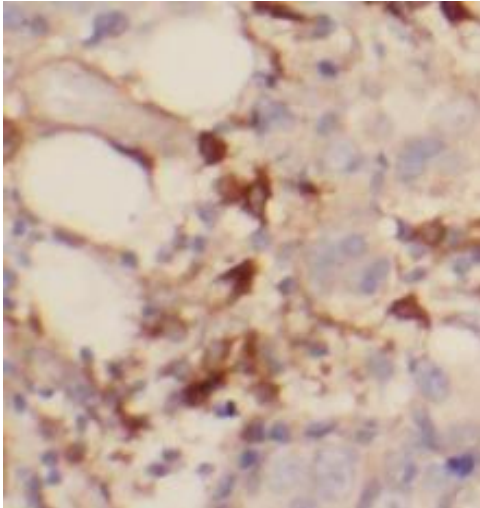
### Wuhan Fine Biotech Co., Ltd.

B9 Bld, High-Tech Medical Devices Park, No. 818 Gaoxin Ave. East Lake High-Tech Development Zone. Wuhan, Hubei, China(430206)

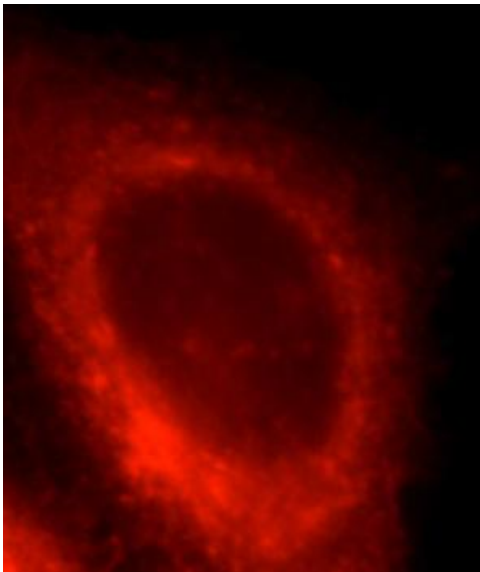
Tested Application: ELISA, WB, IHC, IF, FC, IP

Recommended dilution: WB: 1:1000-1:4000; IP: 1:1000-1:4000; IHC: 1:20-1:200; IF: 1:10-1:100

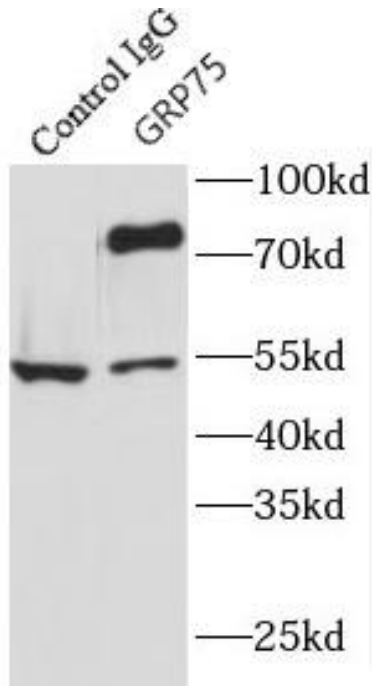
Image:



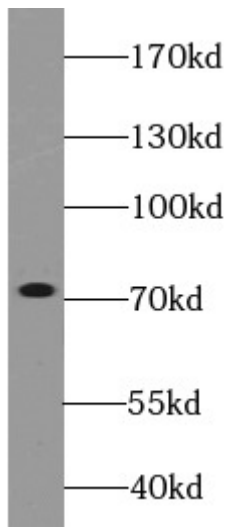
Immunohistochemistry of paraffin-embedded human breast cancer using FNab03661(GRP75 antibody) at dilution of 1:100



Immunofluorescent analysis of HepG2 cells using FNab03661 (GRP75 antibody) at dilution of 1:25 and Rhodamine-Goat anti-Rabbit IgG



IP Result of anti-GRP75 (IP:FNab03661, 4ug;  
Detection:FNab03661 1:2000) with mouse brain  
tissue lysate 3680ug.



NIH/3T3 cells were subjected to SDS PAGE  
followed by western blot with FNab03661(GRP75  
antibody) at dilution of 1:2000