

## anti- GLUT2 antibody

### Product Information

Catalog No.:	FNab03501
Size:	100µg
Form:	liquid
Purification:	Immunogen affinity purified
Purity:	≥95% as determined by SDS-PAGE
Host:	Rabbit
Clonality:	polyclonal
Clone ID:	None
IsoType:	IgG
Storage:	PBS with 0.02% sodium azide and 50% glycerol pH 7.3, -20°C for 12 months (Avoid repeated freeze / thaw cycles.)

### Background

GLUT2 is a member of glucose transporters or GLUTs which catalyze the glucose transport across plasma membrane. GLUT2 is selectively expressed in hepatocytes, pancreatic beta cells, and absorptive renal and intestinal epithelial cells. GLUT2 is required to maintain normal glucose homeostasis and normal function and development of the endocrine pancreas. Its absence leads to symptoms characteristic of non-insulin-dependent diabetes mellitus. This antibody detected 60-70 kDa fully glycosylated, matured GLUT2 and a nonglycosylated form of GLUT2 around 38-45 kDa.(9354799, 12101013)

### Immunogen information

Immunogen:	solute carrier family 2, facilitated glucose transporter member 2
Synonyms:	GLUT 2, GLUT2, SLC2A2
Observed MW:	60-70 kDa, 38-45 kDa
Uniprot ID :	P11168

### Application

Reactivity:	Human, Rat, Mouse
-------------	-------------------

### Wuhan Fine Biotech Co., Ltd.

B9 Bld, High-Tech Medical Devices Park, No. 818 Gaoxin Ave. East Lake High-Tech Development Zone. Wuhan, Hubei, China(430206)

Tel : (0086)027-87384275

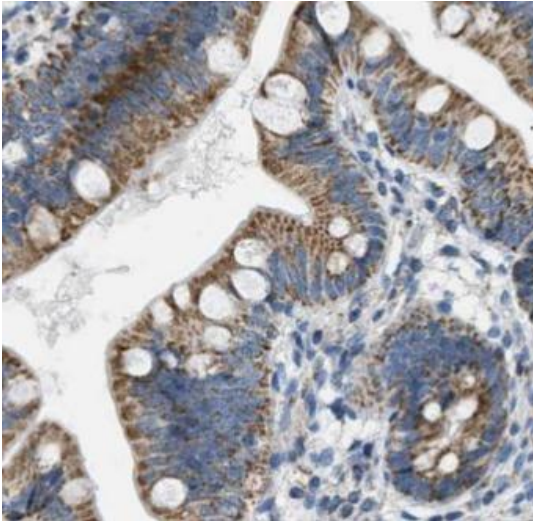
Fax: (0086)027-87800889

[www.fn-test.com](http://www.fn-test.com)

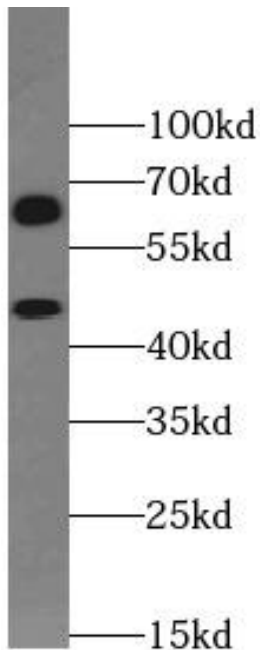
Tested Application: ELISA, IHC, WB

Recommended dilution: WB: 1:200-1:1000; IP: 1:500-1:2000; IHC: 1:50-1:1000

Image:



Immunohistochemistry of paraffin-embedded human small intestine tissue slide using FNab03501(SLC2A2 Antibody) at dilution of 1:50



rat liver tissue were subjected to SDS PAGE followed by western blot with FNab03501(SLC2A2 Antibody) at dilution of 1:400

**Wuhan Fine Biotech Co., Ltd.**

B9 Bld, High-Tech Medical Devices Park, No. 818 Gaoxin Ave. East Lake High-Tech Development Zone. Wuhan, Hubei, China(430206)

Tel : (0086)027-87384275

Fax: (0086)027-87800889

[www.fn-test.com](http://www.fn-test.com)