

anti- GLI2-Specific antibody

Product Information

| | |
|---------------|--|
| Catalog No.: | FNab03477 |
| Size: | 100µg |
| Form: | liquid |
| Purification: | Immunogen affinity purified |
| Purity: | ≥95% as determined by SDS-PAGE |
| Host: | Rabbit |
| Clonality: | polyclonal |
| IsoType: | IgG |
| Storage: | PBS with 0.02% sodium azide and 50% glycerol pH 7.3 , -20°C for 24 months (Avoid repeated freeze / thaw cycles.) |

Immunogen information

| | |
|--------------|--|
| Immunogen: | GLI-Kruppel family member GLI2 |
| Synonyms: | AW546128, GLI Kruppel family member GLI2, Gli2 |
| Observed MW: | 88 kDa |
| Uniprot ID : | P10070 |

Application

| | |
|-----------------------|--|
| Reactivity: | Human, Mouse, Rat; other species are not tested. Please decide the specificity by homology |
| Tested Application: | ELISA, WB, IHC, IF |
| Recommended dilution: | WB: 1:500-1:1000; IHC: 1:20-1:200; IF: 1:10-1:100 |
| Image: | |

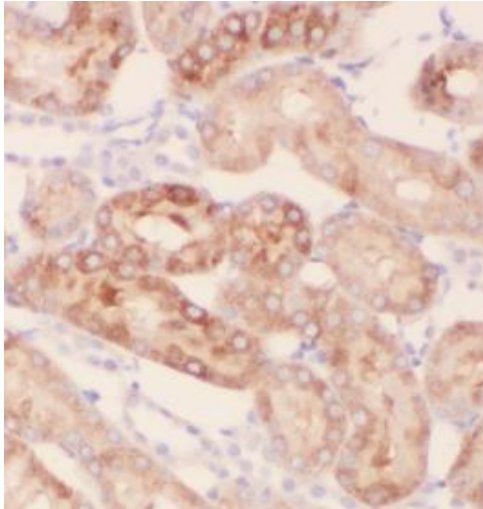
Wuhan Fine Biotech Co., Ltd.

B9 Bld, High-Tech Medical Devices Park, No. 818 Gaoxin Ave. East Lake High-Tech Development Zone. Wuhan, Hubei, China(430206)

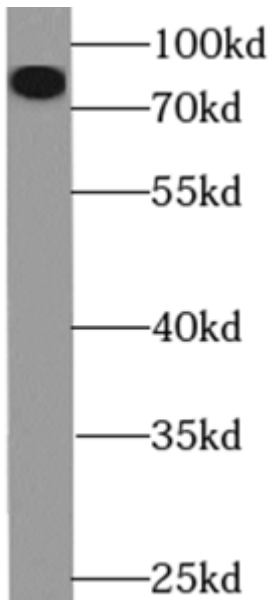
Tel : (0086)027-87384275

Fax: (0086)027-87800889

www.fn-test.com



Immunohistochemistry of paraffin-embedded human kidney using FNab03477(GLI2-Specific antibody) at dilution of 1:50



HEK-293 cells were subjected to SDS PAGE followed by western blot with FNab03477(GLI2-Specific antibody) at dilution of 1:400