

anti- GFP tag antibody

Product Information

Catalog No.:	FNab03433
Size:	100µg
Form:	liquid
Purification:	Immunogen affinity purified
Purity:	≥95% as determined by SDS-PAGE
Host:	Rabbit
Clonality:	polyclonal
Clone ID:	None
IsoType:	IgG
Storage:	PBS with 0.02% sodium azide and 50% glycerol pH 7.3, -20°C for 12 months (Avoid repeated freeze / thaw cycles.)

Background

Green fluorescence protein(GFP) is a protein composed of 238 amino acid residues(26.9kDa) derived from the Jellyfish *Aequorea victoria*, which emits green light(emission peak at 509nm) when excited by blue light(excitation peak at 395nm). GFP has become an invaluable tool in cell biology research, since its intrinsic fluorescence can be visualized in living cells. In contrast to wtGFP, EGFP has a single, strong, red-shifted excitation peak at 488nm. GFPmut1 fluoresces 35-fold more intensely than wtGFP when excited at 488nm, due to an increase in its extinction coefficient(Em). This antibody is a rabbit polyclonal antibody raised against full-length eGFP and reactive against all variants of *Aequorea victoria* GFP such as S65T-GFP, RS-GFP, YFP, CFP and eGFP. Note: Do not add Azium(Sodium Azide or Smite) into the dilution buffer. Azium is the HRP inhibitor which decreases the enzyme activity of HRP.

Immunogen information

Immunogen:	GFP tag
Synonyms:	CFP, eGFP, eYFP, GFP, GFP tag, YFP
Observed MW:	30 kDa

Application

1

Wuhan Fine Biotech Co., Ltd.

B9 Bld, High-Tech Medical Devices Park, No. 818 Gaoxin Ave. East Lake High-Tech Development Zone. Wuhan, Hubei, China(430206)

Tel : (0086)027-87384275

Fax: (0086)027-87800889

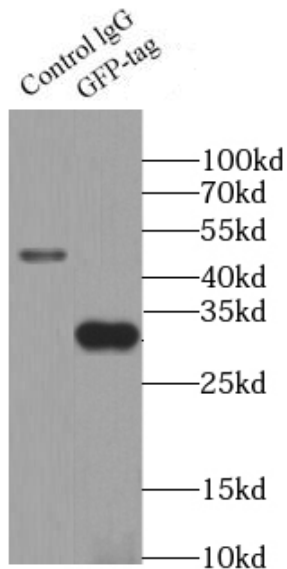
www.fn-test.com

Reactivity: Recombinant protetin, Aequorea victoria, Human

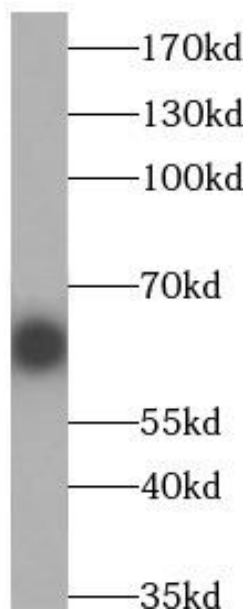
Tested Application: ELISA, WB, IP

Recommended dilution: WB: 1:1000-1:4000; IP: 1:2000-1:20000

Image:



IP Result of anti-GFP tag (IP: FNab03433, 3ug;
Detection: FNab03433 1:5000) with Transfected
HEK-293 cells lysate 300ug.



eGFP-tagged fusion protein were subjected to SDS
PAGE followed by western blot with
FNab03433(GFP antibody) at dilution of 1:2000