

## anti- GCSH antibody

### Product Information

|               |                                                                                                                 |
|---------------|-----------------------------------------------------------------------------------------------------------------|
| Catalog No.:  | FNab03397                                                                                                       |
| Size:         | 100µg                                                                                                           |
| Form:         | liquid                                                                                                          |
| Purification: | Immunogen affinity purified                                                                                     |
| Purity:       | ≥95% as determined by SDS-PAGE                                                                                  |
| Host:         | Rabbit                                                                                                          |
| Clonality:    | polyclonal                                                                                                      |
| Clone ID:     | None                                                                                                            |
| IsoType:      | IgG                                                                                                             |
| Storage:      | PBS with 0.02% sodium azide and 50% glycerol pH 7.3, -20°C for 12 months (Avoid repeated freeze / thaw cycles.) |

### Background

The glycine cleavage system catalyzes the degradation of glycine. The H protein(GCSH) shuttles the methylamine group of glycine from the P protein(GLDC) to the T protein(GCST).

### Immunogen information

|              |                                                        |
|--------------|--------------------------------------------------------|
| Immunogen:   | glycine cleavage system protein H(aminomethyl carrier) |
| Synonyms:    | None                                                   |
| Observed MW: | 15 kDa                                                 |
| UniprotID :  | P23434                                                 |

### Application

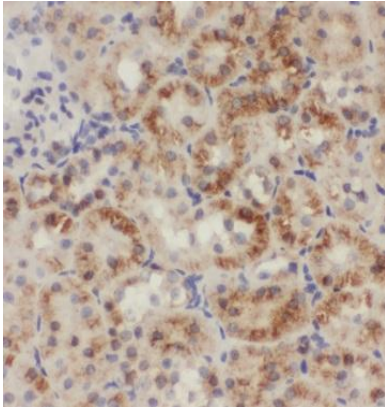
|                       |                                                                     |
|-----------------------|---------------------------------------------------------------------|
| Reactivity:           | Human, Mouse, Rat                                                   |
| Tested Application:   | ELISA, WB, IHC, IF, IP                                              |
| Recommended dilution: | WB: 1:500-1:2000; IP: 1:200-1:1000; IHC: 1:20-1:200; IF: 1:20-1:200 |
| Image:                |                                                                     |

### Wuhan Fine Biotech Co., Ltd.

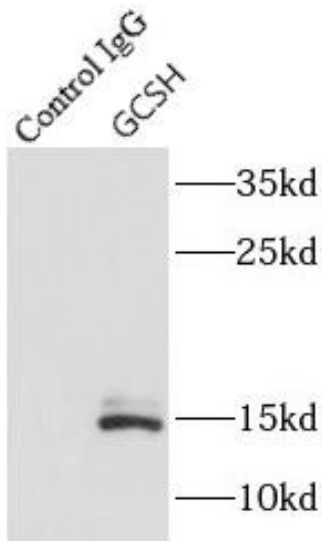
B9 Bld, High-Tech Medical Devices Park, No. 818 GaoxinAve.East Lake High-Tech Development Zone.Wuhan, Hubei, China(430206)

Tel : (0086)027-87384275

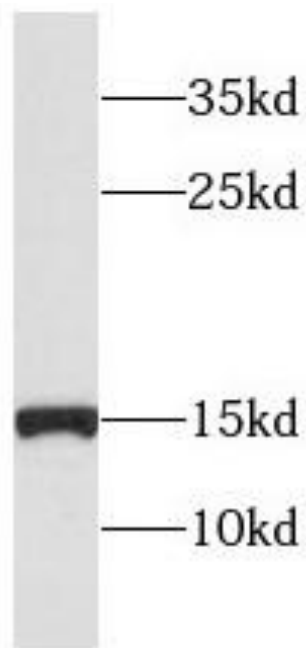
Fax: (0086)027-87800889 [www.fn-test.com](http://www.fn-test.com)



Immunohistochemistry of paraffin-embedded human kidney tissue slide using FNab03397(GCSH Antibody) at dilution of 1:200



IP Result of anti-GCSH (IP:FNab03397, 3ug; Detection:FNab03397 1:1000) with mouse kidney tissue lysate 4000ug.



HEK-293 cells were subjected to SDS PAGE followed by western blot with FNab03397(GCSH antibody) at dilution of 1:500