

## anti- GCDFP-15/PIP antibody

### Product Information

Catalog No.:	FNab03381
Size:	100µg
Form:	liquid
Purification:	Immunogen affinity purified
Purity:	≥95% as determined by SDS-PAGE
Host:	Rabbit
Clonality:	polyclonal
Clone ID:	None
IsoType:	IgG
Storage:	PBS with 0.02% sodium azide and 50% glycerol pH 7.3, -20°C for 12 months (Avoid repeated freeze / thaw cycles.)

### Background

GCDFP-15(gross cystic disease fluid protein 15), also known as PIP(prolactin-induced protein) is a secretory glycoprotein expressed in benign and malignant breast tumor tissues and in some normal exocrine organs such as sweat, salivary, and lacrimal glands(PMID: 12393800). GCDFP-15 expression is increased by prolactin and androgen and inhibited by estrogen(PMID: 18854942). The expression is also regulated by interleukins. GCDFP-15 is a marker of apocrine differentiation and is frequently used for assessment of metastases or regional recurrences of breast origin.

### Immunogen information

Immunogen:	prolactin-induced protein
Synonyms:	GCDFP 15, GCDFP15, gp17, GPIP4, PIP, prolactin induced protein, Prolactin inducible protein, SABP
Observed MW:	None
Uniprot ID :	P12273

### Application

#### Wuhan Fine Biotech Co., Ltd.

B9 Bld, High-Tech Medical Devices Park, No. 818 Gaoxin Ave. East Lake High-Tech Development Zone. Wuhan, Hubei, China(430206)

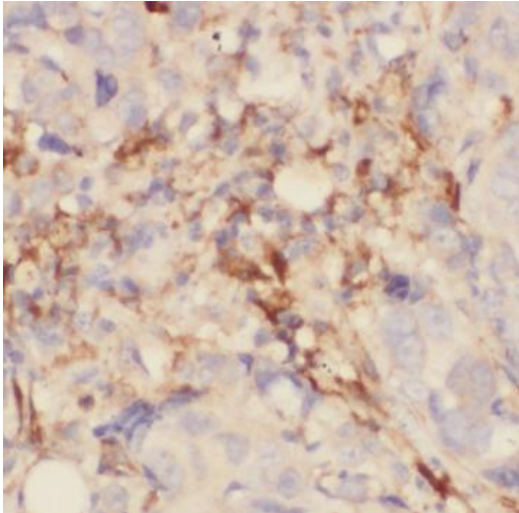
Tel : (0086)027-87384275

Fax: (0086)027-87800889

[www.fn-test.com](http://www.fn-test.com)

---

Reactivity: Human  
Tested Application: ELISA, IHC  
Recommended dilution:IHC: 1:20-1:200  
Image:



Immunohistochemical of paraffin-embedded human breast cancer using FNab03381(GCDFP-15, PIP antibody) at dilution of 1:50