

anti- G6PD antibody

Product Information

| | |
|---------------|---|
| Catalog No.: | FNab03269 |
| Size: | 100µg |
| Form: | liquid |
| Purification: | Immunogen affinity purified |
| Purity: | ≥95% as determined by SDS-PAGE |
| Host: | Rabbit |
| Clonality: | polyclonal |
| Clone ID: | None |
| IsoType: | IgG |
| Storage: | PBS with 0.02% sodium azide and 50% glycerol pH 7.3, -20°C for 12 months (Avoid repeated freeze / thaw cycles.) |

Background

Catalyzes the rate-limiting step of the oxidative pentose-phosphate pathway, which represents a route for the dissimilation of carbohydrates besides glycolysis. The main function of this enzyme is to provide reducing power(NADPH) and pentose phosphates for fatty acid and nucleic acid synthesis.

Immunogen information

| | |
|--------------|-----------------------------------|
| Immunogen: | glucose-6-phosphate dehydrogenase |
| Synonyms: | None |
| Observed MW: | 59 kDa |
| Uniprot ID : | P11413 |

Application

| | |
|--------------------------|--------------|
| Reactivity: | Human |
| Tested Application: | ELISA, WB |
| Recommended dilution:WB: | 1:500-1:2000 |

Wuhan Fine Biotech Co., Ltd.

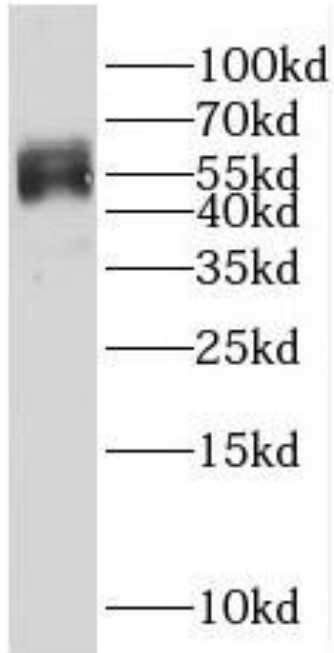
B9 Bld, High-Tech Medical Devices Park, No. 818 Gaoxin Ave. East Lake High-Tech Development Zone. Wuhan, Hubei, China(430206)

Tel : (0086)027-87384275

Fax: (0086)027-87800889

www.fn-test.com

Image:



MCF-7 cells were subjected to SDS PAGE followed by western blot with FNab03269(G6PD antibody) at dilution of 1:1000

Wuhan Fine Biotech Co., Ltd.

B9 Bld, High-Tech Medical Devices Park, No. 818 Gaoxin Ave. East Lake High-Tech Development Zone. Wuhan, Hubei, China(430206)

Tel : (0086)027-87384275

Fax: (0086)027-87800889

www.fn-test.com