

anti- ERO1L antibody

Product Information

Catalog No.:	FNab02852
Size:	100µg
Form:	liquid
Purification:	Immunogen affinity purified
Purity:	≥95% as determined by SDS-PAGE
Host:	Rabbit
Clonality:	polyclonal
Clone ID:	None
IsoType:	IgG
Storage:	PBS with 0.02% sodium azide and 50% glycerol pH 7.3, -20°C for 12 months (Avoid repeated freeze / thaw cycles.)

Background

None

Immunogen information

Immunogen:	ERO1-like
Synonyms:	ERO1 alpha, ERO1 L, ERO1 L alpha, ERO1 like (<i>S. cerevisiae</i>), ERO1 like protein alpha, ERO1L, Oxidoreductin 1 L alpha
Observed MW:	54 kDa
UniprotID :	Q96HE7

Application

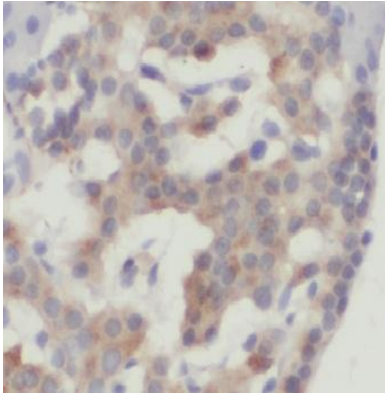
Reactivity:	Human, Mouse, Rat
Tested Application:	ELISA, IHC, WB, FC
Recommended dilution:	WB: 1:200-1:1000; IHC: 1:50-1:500
Image:	

Wuhan Fine Biotech Co., Ltd.

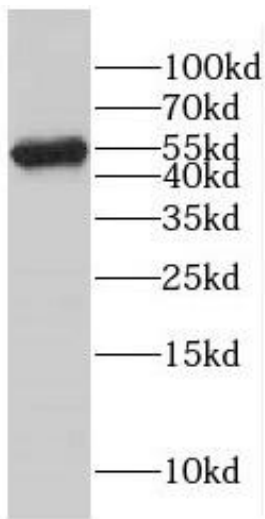
B9 Bld, High-Tech Medical Devices Park, No. 818 GaoxinAve. East Lake High-Tech Development Zone. Wuhan, Hubei, China(430206)

Tel : (0086)027-87384275

Fax: (0086)027-87800889 www.fn-test.com



Immunohistochemistry of paraffin-embedded human pancreas using FNab02852(ERO1L antibody) at dilution of 1:50



mouse ovary tissue were subjected to SDS PAGE followed by western blot with FNab02852(ERO1L antibody) at dilution of 1:100