

## anti- ERK1/2 antibody

### Product Information

Catalog No.:	FNab02846
Size:	100µg
Form:	liquid
Purification:	Immunogen affinity purified
Purity:	≥95% as determined by SDS-PAGE
Host:	Rabbit
Clonality:	polyclonal
IsoType:	IgG
Storage:	PBS with 0.02% sodium azide and 50% glycerol pH 7.3 , -20°C for 24 months (Avoid repeated freeze / thaw cycles.)

### Background

ERK1 and ERK2 belongs to the protein kinase superfamily. It is involved in both the initiation and regulation of meiosis, mitosis, and postmitotic functions in differentiated cells by phosphorylating a number of transcription factors such as ELK-1. ERK1/2 catalized the reaction: ATP + a protein = ADP + a phosphoprotein. It is activated by tyrosine phosphorylation in response to insulin and NGF. This antibody can recognize both ERK1 and ERK2 with the molecular mass of 38-44 kDa.

### Immunogen information

Immunogen:	mitogen-activated protein kinase 1
Synonyms:	ERK, ERK 2, ERK1/2, ERK2, ERT1, MAP kinase 1, MAP kinase 2, MAP kinase isoform p42, MAPK 1, MAPK 2, MAPK1, MAPK2, p40, p41, p41mapk, p42 MAPK, P42MAPK, PRKM1, PRKM2
Observed MW:	38-44 kDa
Uniprot ID :	P28482

### Application

Reactivity:	Human, Mouse, Rat; other species are not tested. Please decide the specificity by homology
-------------	--

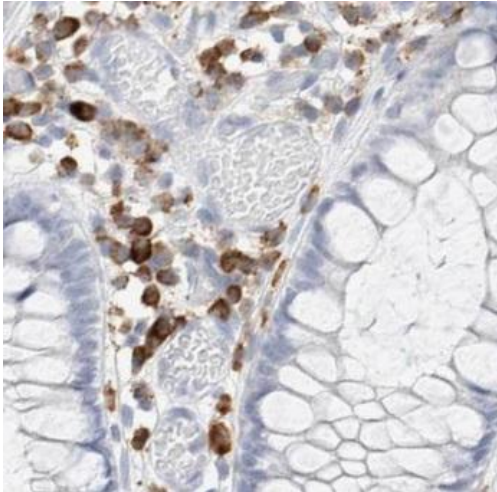
### Wuhan Fine Biotech Co., Ltd.

B9 Bld, High-Tech Medical Devices Park, No. 818 Gaoxin Ave. East Lake High-Tech Development Zone. Wuhan, Hubei, China(430206)

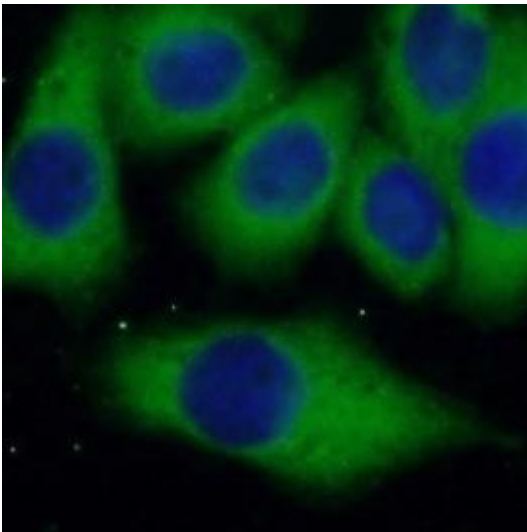
Tested Application: ELISA, WB, IHC, IF

Recommended dilution: WB: 1:500-1:3000; IHC: 1:50-1:500; IF: 1:10-1:100

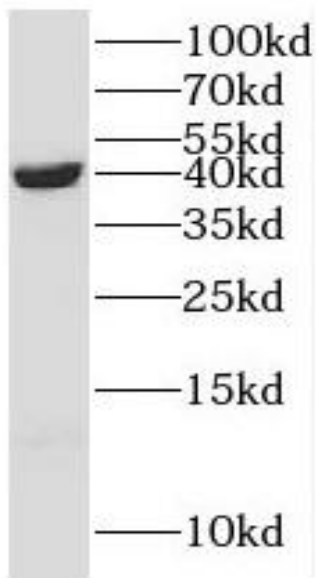
Image:



Immunohistochemistry of paraffin-embedded human colon cancer tissue slide using FNab02846(ERK1/2 Antibody) at dilution of 1:200 heat mediated antigen retrieved with Tris-EDTA buffer(pH9).



Immunofluorescent analysis of Hela cells, using FNab02846(ERK1/2 Antibody) at 1:25 dilution. Blue pseudocolor = DAPI (fluorescent DNA dye).



HeLa cells were subjected to SDS PAGE followed by western blot with FNab02846(ERK1/2 antibody) at dilution of 1:1000