

anti- ERCC6L antibody

Product Information

Catalog No.:	FNab02837
Size:	100µg
Form:	liquid
Purification:	Immunogen affinity purified
Purity:	≥95% as determined by SDS-PAGE
Host:	Rabbit
Clonality:	polyclonal
Clone ID:	None
IsoType:	IgG
Storage:	PBS with 0.02% sodium azide and 50% glycerol pH 7.3, -20°C for 12 months (Avoid repeated freeze / thaw cycles.)

Background

DNA helicase that acts as an essential component of the spindle assembly checkpoint. Contributes to the mitotic checkpoint by recruiting MAD2 to kinetochores and monitoring tension on centromeric chromatin. Acts as a tension sensor that associates with catenated DNA which is stretched under tension until it is resolved during anaphase.

Immunogen information

Immunogen:	excision repair cross-complementing rodent repair deficiency, complementation group 6-like
Synonyms:	PICH
Observed MW:	180kd
UniprotID :	Q2NKX8

Application

Reactivity:	Human, Mouse, Rat
Tested Application:	ELISA, WB
Recommended dilution: WB:	1:500-1:2000

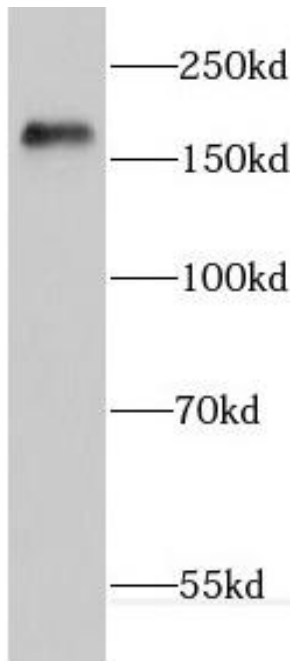
Wuhan Fine Biotech Co., Ltd.

B9 Bld, High-Tech Medical Devices Park, No. 818 Gaoxin Ave. East Lake High-Tech Development Zone. Wuhan, Hubei, China (430206)

Tel : (0086)027-87384275

Fax: (0086)027-87800889 www.fn-test.com

Image:



human heart tissue were subjected to SDS PAGE followed by western blot with FNab02837(ERCC6L antibody) at dilution of 1:800

Wuhan Fine Biotech Co., Ltd.

B9 Bld, High-Tech Medical Devices Park, No. 818 GaoxinAve. East Lake High-Tech Development Zone. Wuhan, Hubei, China(430206)

Tel : (0086)027-87384275

Fax: (0086)027-87800889 www.fn-test.com