

anti- ENOPH1 antibody

Product Information

Catalog No.:	FNab02769
Size:	100µg
Form:	liquid
Purification:	Immunogen affinity purified
Purity:	≥95% as determined by SDS-PAGE
Host:	Rabbit
Clonality:	polyclonal
Clone ID:	None
IsoType:	IgG
Storage:	PBS with 0.02% sodium azide and 50% glycerol pH 7.3, -20°C for 12 months (Avoid repeated freeze / thaw cycles.)

Background

Bifunctional enzyme that catalyzes the enolization of 2,3-diketo-5-methylthiopentyl-1-phosphate(DK-MTP-1-P) into the intermediate 2-hydroxy-3-keto-5-methylthiopentyl-1-phosphate(HK-MTPenyl-1-P), which is then dephosphorylated to form the acireductone 1,2-dihydroxy-3-keto-5-methylthiopentene(DHK-MTPene).

Immunogen information

Immunogen:	enolase-phosphatase 1
Synonyms:	MASA
Observed MW:	35 kDa
UniprotID :	Q9UHY7

Application

Reactivity:	Human, Mouse, Rat
Tested Application:	ELISA, WB
Recommended dilution:WB:	1:500-1:2000

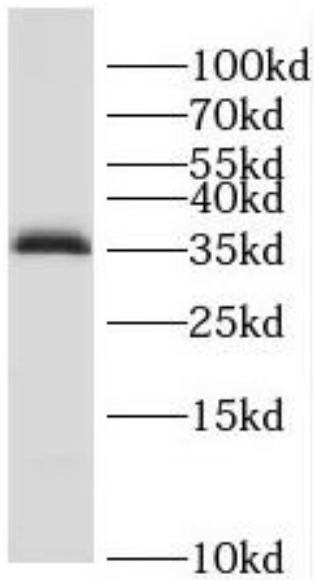
Wuhan Fine Biotech Co., Ltd.

B9 Bld, High-Tech Medical Devices Park, No. 818 GaoxinAve.East Lake High-Tech Development Zone.Wuhan, Hubei, China(430206)

Tel : (0086)027-87384275

Fax: (0086)027-87800889 www.fn-test.com

Image:



HL-60 cells were subjected to SDS PAGE followed by western blot with FNab02769(ENOPH1 antibody) at dilution of 1:300