

anti- EML1 antibody

Product Information

Catalog No.:	FNab02756
Size:	100µg
Form:	liquid
Purification:	Immunogen affinity purified
Purity:	≥95% as determined by SDS-PAGE
Host:	Rabbit
Clonality:	polyclonal
Clone ID:	None
IsoType:	IgG
Storage:	PBS with 0.02% sodium azide and 50% glycerol pH 7.3, -20°C for 12 months (Avoid repeated freeze / thaw cycles.)

Background

Modulates the assembly and organization of the microtubule cytoskeleton, and probably plays a role in regulating the orientation of the mitotic spindle and the orientation of the plane of cell division. Required for normal proliferation of neuronal progenitor cells in the developing brain and for normal brain development. Does not affect neuron migration per se (By similarity).

Immunogen information

Immunogen:	echinoderm microtubule associated protein like 1
Synonyms:	EML1, EMAP1, EMAP, ELP79, EMAPL1
Observed MW:	90kd
Uniprot ID :	O00423

Application

Reactivity:	Human, Mouse, Rat
Tested Application:	ELISA, WB, IF
Recommended dilution:	WB: 1:500-1:2000; IF: 1:10-1:100

Wuhan Fine Biotech Co., Ltd.

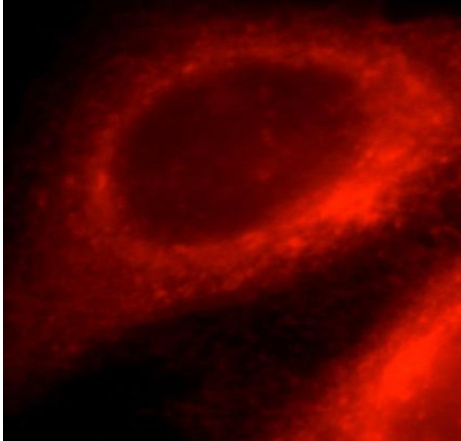
B9 Bld, High-Tech Medical Devices Park, No. 818 Gaoxin Ave. East Lake High-Tech Development Zone. Wuhan, Hubei, China (430206)

Tel : (0086)027-87384275

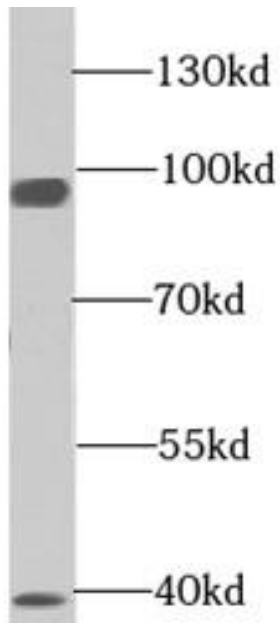
Fax: (0086)027-87800889

www.fn-test.com

Image:



Immunofluorescent analysis of HepG2 cells, using EML1 antibody FNab02756 at 1:25 dilution and Rhodamine-labeled goat anti-rabbit IgG (red)



HepG2 cells were subjected to SDS PAGE followed by western blot with FNab02756(EML1 antibody) at dilution of 1:300