

anti- ELF2 antibody

Product Information

| | |
|---------------|---|
| Catalog No.: | FNab02736 |
| Size: | 100µg |
| Form: | liquid |
| Purification: | Immunogen affinity purified |
| Purity: | ≥95% as determined by SDS-PAGE |
| Host: | Rabbit |
| Clonality: | polyclonal |
| Clone ID: | None |
| IsoType: | IgG |
| Storage: | PBS with 0.02% sodium azide and 50% glycerol pH 7.3, -20°C for 12 months (Avoid repeated freeze / thaw cycles.) |

Background

Isoform 1 transcriptionally activates the LYN and BLK promoters and acts synergistically with RUNX1 to transactivate the BLK promoter. Isoform 2 may function in repression of RUNX1-mediated transactivation.

Immunogen information

| | |
|--------------|--|
| Immunogen: | E74-like factor 2(ets domain transcription factor) |
| Synonyms: | NERF |
| Observed MW: | 63-64kd,56-57kd |
| UniprotID : | Q15723 |

Application

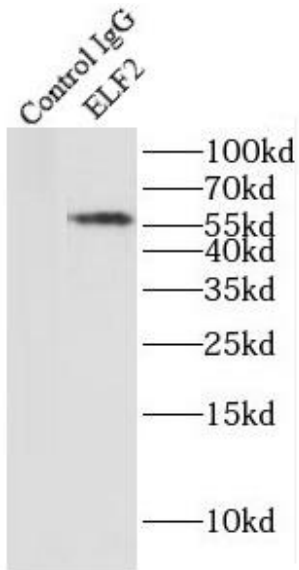
| | |
|-----------------------|------------------------------------|
| Reactivity: | Human, Mouse, Rat |
| Tested Application: | ELISA, WB, IP |
| Recommended dilution: | WB: 1:500-1:2000; IP: 1:200-1:2000 |
| Image: | |

Wuhan Fine Biotech Co., Ltd.

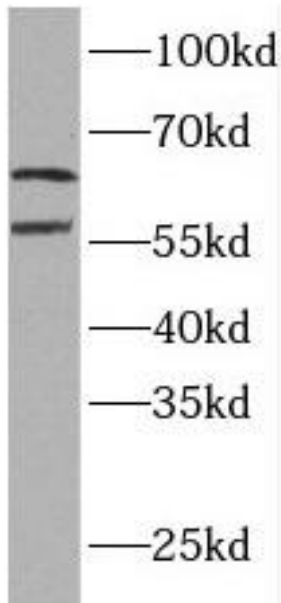
B9 Bld, High-Tech Medical Devices Park, No. 818 GaoxinAve.East Lake High-Tech Development Zone.Wuhan, Hubei, China(430206)

Tel :(0086)027-87384275

Fax: (0086)027-87800889 www.fn-test.com



IP Result of anti-ELF2 (IP:FNab02736, 4ug;
Detection:FNab02736 1:500) with A2780 cells
lysate 960ug.



A2780 cells were subjected to SDS PAGE
followed by western blot with FNab02736(ELF2
antibody) at dilution of 1:500