

anti- Cytokeratin 1-specific antibody

Product Information

Catalog No.:	FNab02211
Size:	100µg
Form:	liquid
Purification:	Immunogen affinity purified
Purity:	≥95% as determined by SDS-PAGE
Host:	Rabbit
Clonality:	polyclonal
IsoType:	IgG
Storage:	PBS with 0.02% sodium azide and 50% glycerol pH 7.3 , -20°C for 24 months (Avoid repeated freeze / thaw cycles.)

Background

Keratins are a large family of proteins that form the intermediate filament cytoskeleton of epithelial cells, which are classified into two major sequence types. Type I keratins are a group of acidic intermediate filament proteins, including K9–K23, and the hair keratins Ha1–Ha8. Type II keratins are the basic or neutral counterparts to the acidic type I keratins, including K1–K8, and the hair keratins Ha1–Ha8. Type II keratins are the basic or neutral counterparts to the acidic type I keratins, including K1–K8, and the hair keratins, Hb1–Hb6. Keratin-1 is type II keratin. It is a specific marker for terminal differentiation in mammalian epidermis. It is specifically expressed in the spinous and granular layers of the epidermis with family member KRT10 and mutations in these genes have been associated with bullous congenital ichthyosiform erythroderma. This antibody is specifically against ketatin I.

Immunogen information

Immunogen:	keratin 1
Synonyms:	67 kDa cytokeratin, CK 1, CK1, Cytokeratin 1, keratin 1, KRT1
Observed MW:	67 kDa
Uniprot ID :	P04264

Application

1

Wuhan Fine Biotech Co., Ltd.

B9 Bld, High-Tech Medical Devices Park, No. 818 Gaoxin Ave. East Lake High-Tech Development Zone. Wuhan, Hubei, China(430206)

Tel : (0086)027-87384275

Fax: (0086)027-87800889

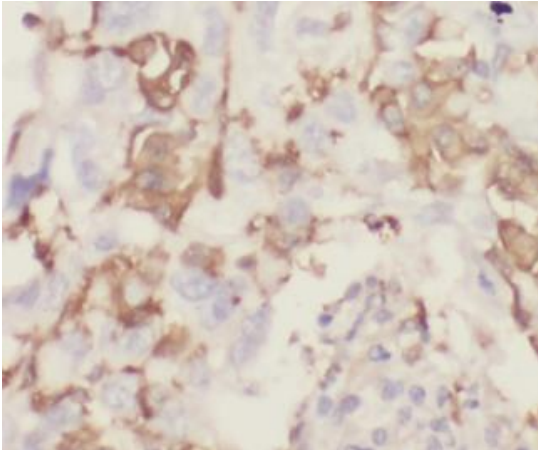
www.fn-test.com

Reactivity: Human, Mouse

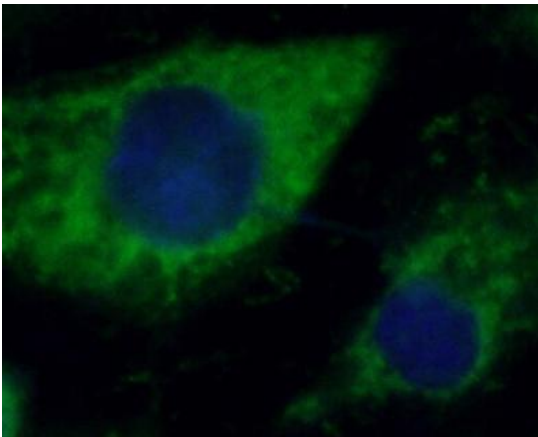
Tested Application: ELISA, IP, IF, WB, IHC

Recommended dilution: WB: 1:500-1:5000; IP: 1:200-1:2000; IHC: 1:20-1:200; IF: 1:20-1:200

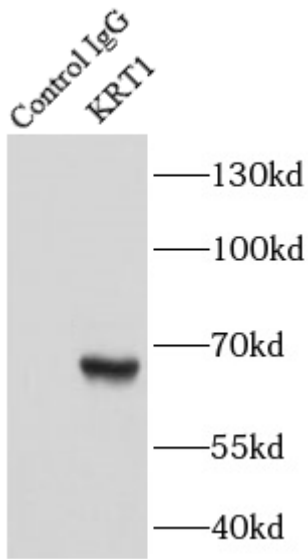
Image:



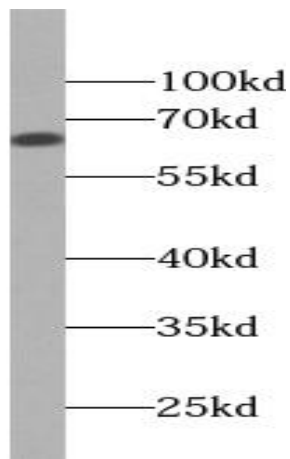
Immunohistochemistry of paraffin-embedded human lung cancer using FNab02211(KRT1-specific antibody) at dilution of 1:50



Immunofluorescent analysis of A431 cells using FNab02211 (KRT1-specific Antibody) at dilution of 1:50 and Alexa Fluor 488-conjugated AffiniPure Goat Anti-Rabbit IgG(H+L)



IP Result of anti-KRT1-specific (IP: FNab02211, 3ug; Detection: FNab02211 1:500) with A431 cells lysate 3500ug.



mouse skin tissue were subjected to SDS PAGE followed by western blot with FNab02211(KRT1-specific Antibody) at dilution of 1:1000