

---

## anti-Cyclophilin E antibody

### Product Information

|               |                                                                                                                 |
|---------------|-----------------------------------------------------------------------------------------------------------------|
| Catalog No.:  | FNab02139                                                                                                       |
| Size:         | 100µg                                                                                                           |
| Form:         | liquid                                                                                                          |
| Purification: | Immunogen affinity purified                                                                                     |
| Purity:       | ≥95% as determined by SDS-PAGE                                                                                  |
| Host:         | Rabbit                                                                                                          |
| Clonality:    | polyclonal                                                                                                      |
| Clone ID:     | None                                                                                                            |
| IsoType:      | IgG                                                                                                             |
| Storage:      | PBS with 0.02% sodium azide and 50% glycerol pH 7.3, -20°C for 12 months (Avoid repeated freeze / thaw cycles.) |

### Background

None

### Immunogen information

|              |                                           |
|--------------|-------------------------------------------|
| Immunogen:   | peptidylprolyl isomerase E(cyclophilin E) |
| Synonyms:    | None                                      |
| Observed MW: | 33 kDa                                    |
| UniprotID :  | Q9UNP9                                    |

### Application

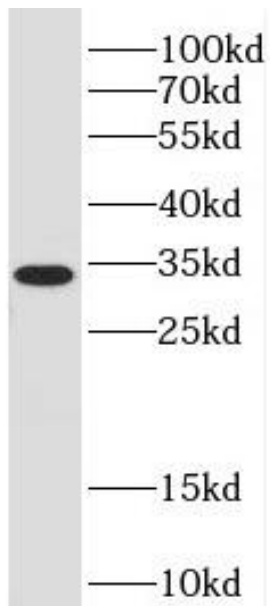
|                          |                   |
|--------------------------|-------------------|
| Reactivity:              | Human, Mouse, Rat |
| Tested Application:      | ELISA, WB         |
| Recommended dilution:WB: | 1:500-1:2000      |
| Image:                   |                   |

### Wuhan Fine Biotech Co., Ltd.

B9 Bld, High-Tech Medical Devices Park, No. 818 GaoxinAve.East Lake High-Tech Development Zone.Wuhan, Hubei, China(430206)

Tel :( 0086)027-87384275

Fax: (0086)027-87800889 [www.fn-test.com](http://www.fn-test.com)



HEK-293 cells were subjected to SDS PAGE followed by western blot with FNab02139( Cyclophilin E antibody) at dilution of 1:1500