

anti- CTAGE1 antibody

Product Information

Catalog No.:	FNab02042
Size:	100µg
Form:	liquid
Purification:	Immunogen affinity purified
Purity:	≥95% as determined by SDS-PAGE
Host:	Rabbit
Clonality:	polyclonal
Clone ID:	None
IsoType:	IgG
Storage:	PBS with 0.02% sodium azide and 50% glycerol pH 7.3, -20°C for 12 months (Avoid repeated freeze / thaw cycles.)

Background

None

Immunogen information

Immunogen:	cutaneous T-cell lymphoma-associated antigen 1
Synonyms:	CTAGE2
Observed MW:	86-120 kDa
UniprotID :	Q96RT6

Application

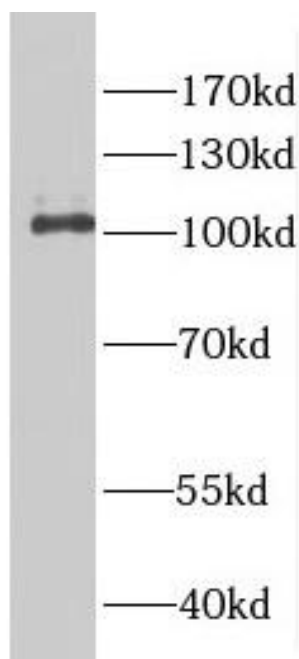
Reactivity:	Human
Tested Application:	ELISA, WB
Recommended dilution: WB:	1:500-1:2000
Image:	

Wuhan Fine Biotech Co., Ltd.

B9 Bld, High-Tech Medical Devices Park, No. 818 GaoxinAve. East Lake High-Tech Development Zone. Wuhan, Hubei, China(430206)

Tel : (0086)027-87384275

Fax: (0086)027-87800889 www.fn-test.com



K-562 cells were subjected to SDS PAGE followed by western blot with FNab02042(CTAGE1 antibody) at dilution of 1:600