

## anti- CSTF1 antibody

### Product Information

Catalog No.:	FNab02038
Size:	100µg
Form:	liquid
Purification:	Immunogen affinity purified
Purity:	≥95% as determined by SDS-PAGE
Host:	Rabbit
Clonality:	polyclonal
Clone ID:	None
IsoType:	IgG
Storage:	PBS with 0.02% sodium azide and 50% glycerol pH 7.3, -20°C for 12 months (Avoid repeated freeze / thaw cycles.)

### Background

One of the multiple factors required for polyadenylation and 3'-end cleavage of mammalian pre-mRNAs. May be responsible for the interaction of CSTF with other factors to form a stable complex on the pre-mRNA.

### Immunogen information

Immunogen:	cleavage stimulation factor, 3' pre-RNA, subunit 1, 50kDa
Synonyms:	None
Observed MW:	50 kDa
UniprotID :	Q05048

### Application

Reactivity:	Human
Tested Application:	ELISA, WB, IP
Recommended dilution:	WB: 1:500-1:2000; IP: 1:200-1:2000
Image:	

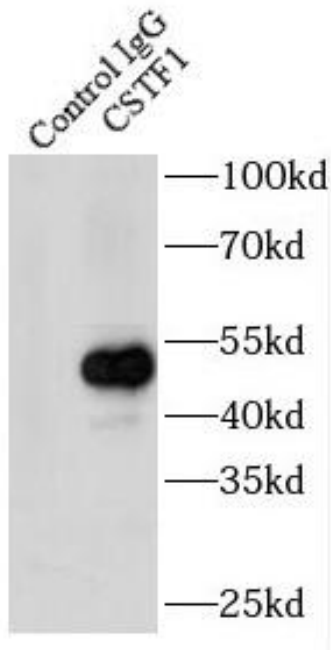
### Wuhan Fine Biotech Co., Ltd.

B9 Bld, High-Tech Medical Devices Park, No. 818 GaoxinAve. East Lake High-Tech Development Zone. Wuhan, Hubei, China(430206)

Tel : (0086)027-87384275

Fax: (0086)027-87800889 [www.fn-test.com](http://www.fn-test.com)

IP Result of anti-CSTF1 (IP:FNab02038, 4ug;  
Detection:FNab02038 1:500) with K-562 cells  
lysate 1540ug.



HeLa cells were subjected to SDS PAGE followed  
by western blot with FNab02038(CSTF1 antibody)  
at dilution of 1:1000

