

## anti- CREM antibody

### Product Information

|               |   |
|---------------|---|
| Catalog No.:  | FNab01970   |
| Size:         | 100µg   |
| Form:         | liquid  |
| Purification: | Immunogen affinity purified   |
| Purity:       | ≥95% as determined by SDS-PAGE  |
| Host:         | Rabbit  |
| Clonality:    | polyclonal  |
| Clone ID:     | None  |
| IsoType:      | IgG   |
| Storage:      | PBS with 0.02% sodium azide and 50% glycerol pH 7.3, -20°C for 12 months (Avoid repeated freeze / thaw cycles.) |

### Background

Transcriptional regulator that binds the cAMP response element(CRE), a sequence present in many viral and cellular promoters. Isoforms are either transcriptional activators or repressors. Plays a role in spermatogenesis and is involved in spermatid maturation(PubMed:10373550). Isoform 6: May play a role in the regulation of the circadian clock: acts as a transcriptional repressor of the core circadian component PER1 by directly binding to cAMP response elements in its promoter.

### Immunogen information

|              |   |
|--------------|---|
| Immunogen:   | cAMP responsive element modulator                   |
| Synonyms:    | CREM, hCREM 2, ICER, Inducible cAMP early repressor |
| Observed MW: | 36 kDa  |
| Uniprot ID : | Q03060  |

### Application

|                     |                   |
|---------------------|-------------------|
| Reactivity:         | Human, Mouse, Rat |
| Tested Application: | ELISA, IHC, WB    |

### Wuhan Fine Biotech Co., Ltd.

B9 Bld, High-Tech Medical Devices Park, No. 818 Gaoxin Ave. East Lake High-Tech Development Zone. Wuhan, Hubei, China(430206)

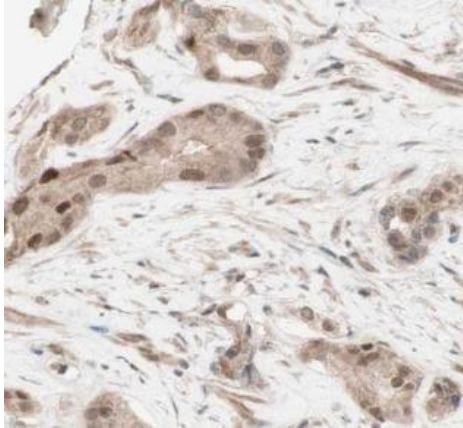
Tel : (0086)027-87384275

Fax: (0086)027-87800889

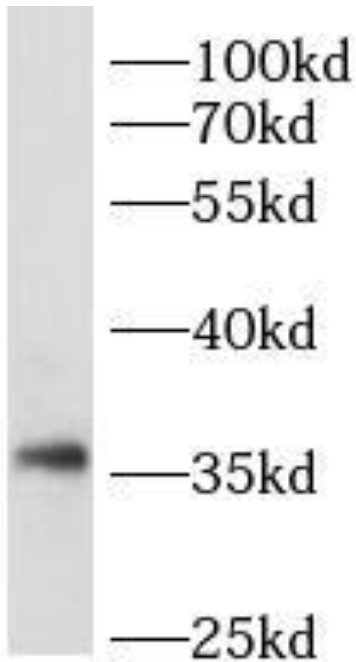
[www.fn-test.com](http://www.fn-test.com)

Recommended dilution: WB: 1:500 - 1:2000; IHC: 1:50 - 1:200

Image:



Immunohistochemistry of paraffin-embedded human prostate cancer using FNab01970(CREM antibody) at dilution of 1:50



rat testis tissue were subjected to SDS PAGE followed by western blot with FNab01970(CREM Antibody) at dilution of 1:1000

**Wuhan Fine Biotech Co., Ltd.**

B9 Bld, High-Tech Medical Devices Park, No. 818 Gaoxin Ave. East Lake High-Tech Development Zone. Wuhan, Hubei, China(430206)

Tel : (0086)027-87384275

Fax: (0086)027-87800889

[www.fn-test.com](http://www.fn-test.com)