

anti- CREB1 antibody

Product Information

Catalog No.:	FNab01961
Size:	100µg
Form:	liquid
Purification:	Immunogen affinity purified
Purity:	≥95% as determined by SDS-PAGE
Host:	Rabbit
Clonality:	polyclonal
Clone ID:	None
IsoType:	IgG
Storage:	PBS with 0.02% sodium azide and 50% glycerol pH 7.3, -20°C for 12 months (Avoid repeated freeze / thaw cycles.)

Background

Phosphorylation-dependent transcription factor that stimulates transcription upon binding to the DNA cAMP response element(CRE), a sequence present in many viral and cellular promoters. Transcription activation is enhanced by the TORC coactivators which act independently of Ser-133 phosphorylation. Involved in different cellular processes including the synchronization of circadian rhythmicity and the differentiation of adipose cells.

Immunogen information

Immunogen:	cAMP responsive element binding protein 1
Synonyms:	CREB, CREB 1, CREB1
Observed MW:	43-46 kDa
UniprotID :	P16220

Application

Reactivity:	Human, Mouse, Rat, Monkey
Tested Application:	ELISA, IP, WB, IF, IHC, FC
Recommended dilution:	WB: 1:500-1:3000; IP: 1:500-1:1000; IHC: 1:20-1:200; IF: 1:10-1:100

1

Wuhan Fine Biotech Co., Ltd.

B9 Bld, High-Tech Medical Devices Park, No. 818 GaoxinAve. East Lake High-Tech Development Zone. Wuhan, Hubei, China(430206)

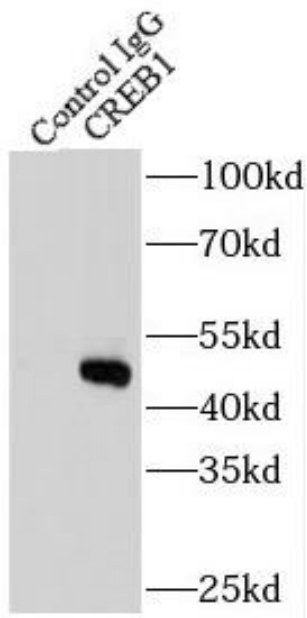
Tel : (0086)027-87384275

Fax: (0086)027-87800889 www.fn-test.com

Image:



Immunohistochemistry of paraffin-embedded human thyroid tissue slide using FNab01961(CREB1 Antibody) at dilution of 1:50



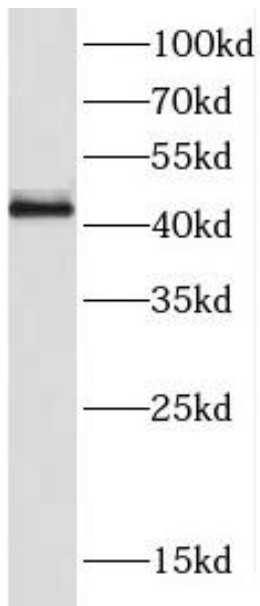
IP Result of anti-CREB1 (IP:FNab01961, 3ug; Detection:FNab01961 1:600) with HEK-293 cells lysate 2000ug.

Wuhan Fine Biotech Co., Ltd.

B9 Bld, High-Tech Medical Devices Park, No. 818 GaoxinAve. East Lake High-Tech Development Zone. Wuhan, Hubei, China(430206)

Tel : (0086)027-87384275

Fax: (0086)027-87800889 www.fn-test.com



HeLa cells were subjected to SDS PAGE followed by western blot with FNab01961(CREB1 antibody) at dilution of 1:1500