

## anti- CPT1C antibody

### Product Information

Catalog No.:	FNab01945
Size:	100µg
Form:	liquid
Purification:	Protein A+G purification
Purity:	≥95% as determined by SDS-PAGE
Host:	Mouse
Clonality:	monoclonal
Clone ID:	4E4
IsoType:	IgG1
Storage:	PBS with 0.02% sodium azide and 50% glycerol pH 7.3, -20°C for 12 months (Avoid repeated freeze / thaw cycles.)

### Background

May play a role in lipid metabolic process.

### Immunogen information

Immunogen:	carnitine palmitoyltransferase 1C
Synonyms:	CATL1
Observed MW:	82kD
Uniprot ID :	Q8TCG5

### Application

Reactivity:	Human
Tested Application:	ELISA, WB, IHC
Recommended dilution:	WB: 1:500-1:1000; IHC: 1:20-1:200
Image:	

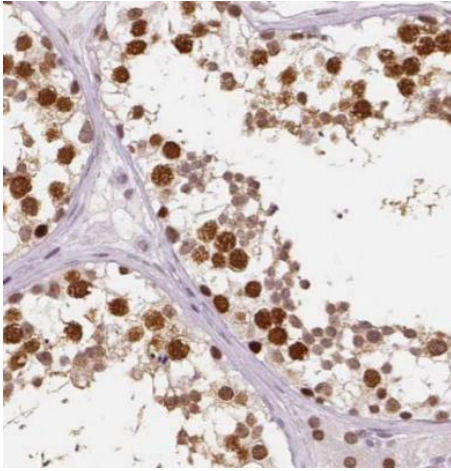
### Wuhan Fine Biotech Co., Ltd.

B9 Bld, High-Tech Medical Devices Park, No. 818 Gaoxin Ave. East Lake High-Tech Development Zone. Wuhan, Hubei, China(430206)

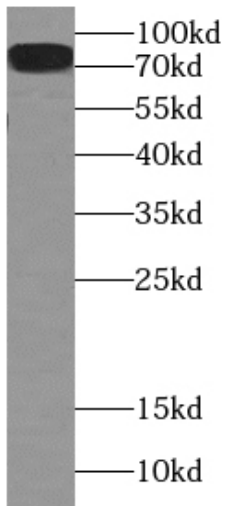
Tel : (0086)027-87384275

Fax: (0086)027-87800889

[www.fn-test.com](http://www.fn-test.com)



Immunohistochemistry of paraffin-embedded human testis using FNab01945(CPT1C antibody) at dilution of 1:50



human brain tissue were subjected to SDS PAGE followed by western blot with FNab01945(CPT1C antibody) at dilution of 1:500