

anti- CPT1B-specific antibody

Product Information

Catalog No.:	FNab01944
Size:	100µg
Form:	liquid
Purification:	Immunogen affinity purified
Purity:	≥95% as determined by SDS-PAGE
Host:	Rabbit
Clonality:	polyclonal
Clone ID:	None
IsoType:	IgG
Storage:	PBS with 0.02% sodium azide and 50% glycerol pH 7.3, -20°C for 12 months (Avoid repeated freeze / thaw cycles.)

Background

None

Immunogen information

Immunogen:	carnitine palmitoyltransferase1B(muscle)
Synonyms:	None
Observed MW:	80 kDa
UniprotID :	Q92523

Application

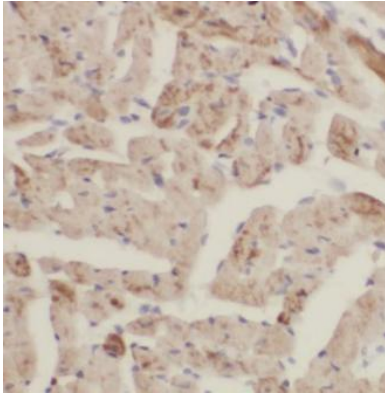
Reactivity:	Human, Mouse
Tested Application:	ELISA, WB, IHC, IP
Recommended dilution:	WB: 1:500-1:2000; IHC: 1:50-1:500; IP: 1:500-1:1000
Image:	

Wuhan Fine Biotech Co., Ltd.

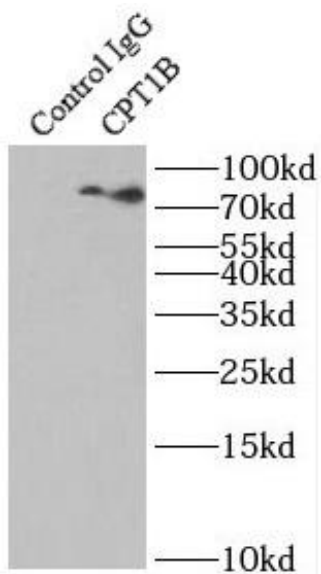
B9 Bld, High-Tech Medical Devices Park, No. 818 GaoxinAve.East Lake High-Tech Development Zone.Wuhan, Hubei, China(430206)

Tel : (0086)027-87384275

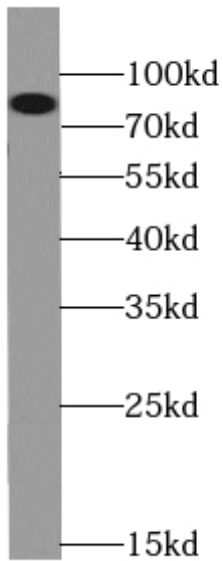
Fax: (0086)027-87800889 www.fn-test.com



Immunohistochemistry of paraffin-embedded mouse heart tissue slide using FNab01944(CPT1B-specific antibody) at dilution of 1:200



IP result of anti-CPT1B-specific(IP:FNab01944, 4ug; Detection:FNab01944 1:600) with mouse heart tissue lysate 3600 ug



mouse heart tissue were subjected to SDS PAGE followed by western blot with FNab01944(CPT1B-specific antibody) at dilution of 1:1000