

anti- CPPED1 antibody

Product Information

Catalog No.:	FNab01933
Size:	100µg
Form:	liquid
Purification:	Immunogen affinity purified
Purity:	≥95% as determined by SDS-PAGE
Host:	Rabbit
Clonality:	polyclonal
Clone ID:	None
IsoType:	IgG
Storage:	PBS with 0.02% sodium azide and 50% glycerol pH 7.3, -20°C for 12 months (Avoid repeated freeze / thaw cycles.)

Background

Protein phosphatase that dephosphorylates AKT family kinase specifically at 'Ser-473', blocking cell cycle progression and promoting cell apoptosis. May play an inhibitory role in glucose uptake by adipocytes.

Immunogen information

Immunogen:	calcineurin-like phosphoesterase domain containing 1
Synonyms:	CSTP1
Observed MW:	28-35 kDa
UniprotID :	Q9BRF8

Application

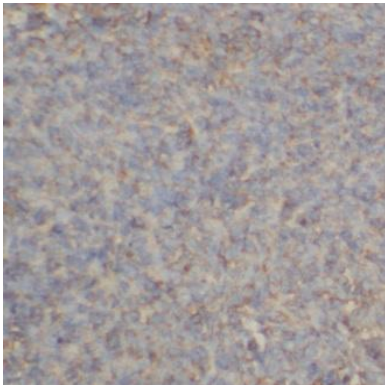
Reactivity:	Human
Tested Application:	ELISA, IHC, WB
Recommended dilution:	WB: 1:500-1:2000; IHC: 1:20-1:200
Image:	

Wuhan Fine Biotech Co., Ltd.

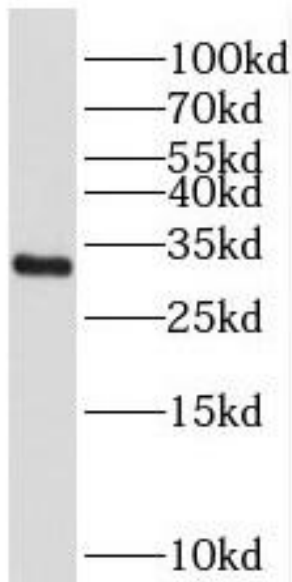
B9 Bld, High-Tech Medical Devices Park, No. 818 GaoxinAve. East Lake High-Tech Development Zone. Wuhan, Hubei, China(430206)

Tel : (0086)027-87384275

Fax: (0086)027-87800889 www.fn-test.com



Immunohistochemistry of paraffin-embedded human liver cancer tissue slide using FNab01933(CPPED1 Antibody) at dilution of 1:50



SMMC-7721 cells were subjected to SDS PAGE followed by western blot with FNab01933(CPPED1 Antibody) at dilution of 1:300