

anti- CLYBL antibody

Product Information

Catalog No.:	FNab01783
Size:	100µg
Form:	liquid
Purification:	Immunogen affinity purified
Purity:	≥95% as determined by SDS-PAGE
Host:	Rabbit
Clonality:	polyclonal
Clone ID:	None
IsoType:	IgG
Storage:	PBS with 0.02% sodium azide and 50% glycerol pH 7.3, -20°C for 12 months (Avoid repeated freeze / thaw cycles.)

Background

Mitochondrial malate and beta-methylmalate synthase, which may be involved in vitamin B12 metabolism(Probable). Acts both as a malate synthase, converting glyoxylate and acetyl-CoA to malate. Also acts as a beta-methylmalate synthase by mediating conversion of glyoxylate and propionyl-CoA to beta-methylmalate(PubMed:24334609).

Immunogen information

Immunogen:	citrate lyase beta like
Synonyms:	CLB
Observed MW:	37 kDa
UniprotID :	Q8N0X4

Application

Reactivity:	Human, Mouse, Rat
Tested Application:	ELISA, WB, IHC
Recommended dilution:	WB: 1:500-1:2000; IHC: 1:20-1:200

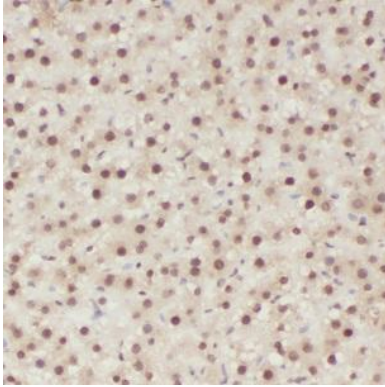
Wuhan Fine Biotech Co., Ltd.

B9 Bld, High-Tech Medical Devices Park, No. 818 GaoxinAve.East Lake High-Tech Development Zone.Wuhan, Hubei, China(430206)

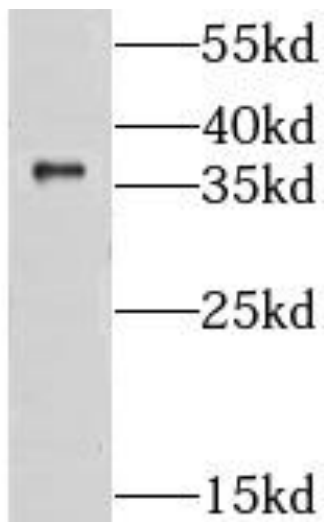
Tel : (0086)027-87384275

Fax: (0086)027-87800889 www.fn-test.com

Image:



Immunohistochemistry of paraffin-embedded human liver using FNab01783(CLYBL antibody) at dilution of 1:50



HeLa cells were subjected to SDS PAGE followed by western blot with FNab01783(CLYBL antibody) at dilution of 1:600

Wuhan Fine Biotech Co., Ltd.

B9 Bld, High-Tech Medical Devices Park, No. 818 GaoxinAve. East Lake High-Tech Development Zone. Wuhan, Hubei, China(430206)

Tel : (0086)027-87384275

Fax: (0086)027-87800889 www.fn-test.com