

anti- CLTCL1 antibody

Product Information

Catalog No.:	FNab01779
Size:	100µg
Form:	liquid
Purification:	Immunogen affinity purified
Purity:	≥95% as determined by SDS-PAGE
Host:	Rabbit
Clonality:	polyclonal
Clone ID:	None
IsoType:	IgG
Storage:	PBS with 0.02% sodium azide and 50% glycerol pH 7.3, -20°C for 12 months (Avoid repeated freeze / thaw cycles.)

Background

Clathrin is the major protein of the polyhedral coat of coated pits and vesicles. Two different adapter protein complexes link the clathrin lattice either to the plasma membrane or to the trans-Golgi network(By similarity).

Immunogen information

Immunogen:	clathrin, heavy chain-like 1
Synonyms:	CLH22, CLTCL, CLTD
Observed MW:	200 kDa
Uniprot ID :	P53675

Application

Reactivity:	Human, Mouse
Tested Application:	ELISA, WB, IHC, IP
Recommended dilution:	WB: 1:500-1:1000; IP: 1:200-1:1000; IHC: 1:50-1:200
Image:	

1

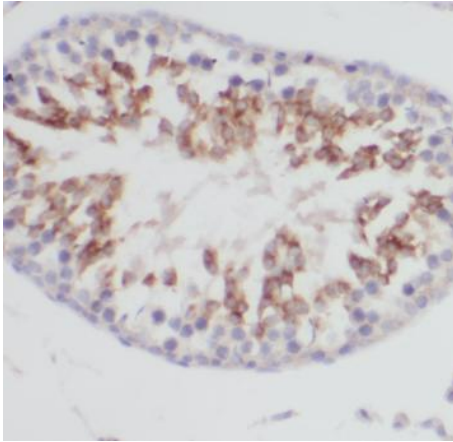
Wuhan Fine Biotech Co., Ltd.

B9 Bld, High-Tech Medical Devices Park, No. 818 Gaoxin Ave. East Lake High-Tech Development Zone. Wuhan, Hubei, China(430206)

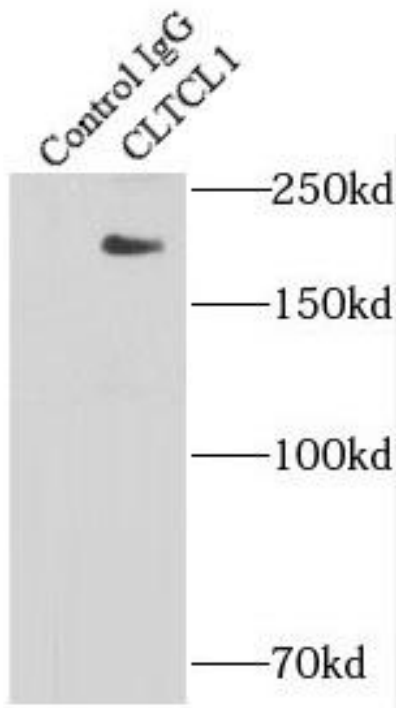
Tel : (0086)027-87384275

Fax: (0086)027-87800889

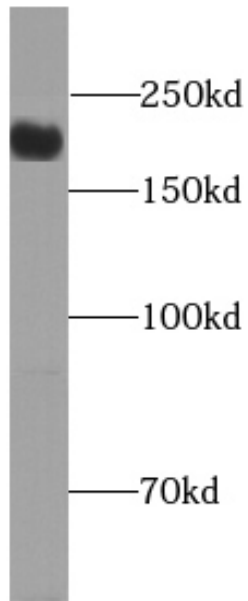
www.fn-test.com



Immunohistochemistry of paraffin-embedded human testis using FNab01779 (CLTCL1 antibody) at dilution of 1:50



IP Result of anti-CLTCL1 (IP:FNab01779, 4ug; Detection:FNab01779 1:300) with HeLa cells lysate 1200ug.



Jurkat cells were subjected to SDS PAGE followed by western blot with FNab01779(CLTCL1 antibody) at dilution of 1:800