

anti- CLEC18A antibody

Product Information

Catalog No.:	FNab01749
Size:	100µg
Form:	liquid
Purification:	Immunogen affinity purified
Purity:	≥95% as determined by SDS-PAGE
Host:	Rabbit
Clonality:	polyclonal
Clone ID:	None
IsoType:	IgG
Storage:	PBS with 0.02% sodium azide and 50% glycerol pH 7.3, -20°C for 12 months (Avoid repeated freeze / thaw cycles.)

Background

Binds polysaccharides in a Ca(2+)-independent manner with a preferentially binding to fucoidan, beta-glucans and galactans(PubMed:26170455).

Immunogen information

Immunogen:	C-type lectin domain family 18, member A
Synonyms:	MRLP2
Observed MW:	47-50kd
UniprotID :	A5D8T8

Application

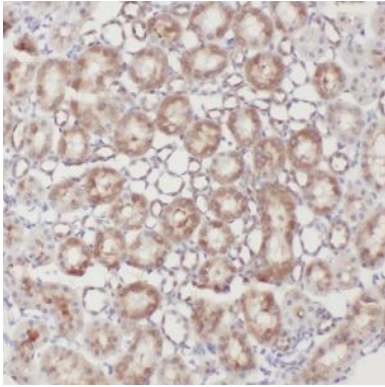
Reactivity:	Human, Mouse, Rat
Tested Application:	ELISA, WB, IHC
Recommended dilution:	WB: 1:500-1:2000; IHC: 1:20-1:200
Image:	

Wuhan Fine Biotech Co., Ltd.

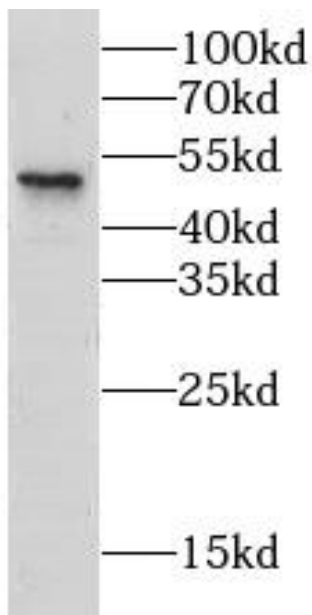
B9 Bld, High-Tech Medical Devices Park, No. 818 GaoxinAve.East Lake High-Tech Development Zone.Wuhan, Hubei, China(430206)

Tel :(0086)027-87384275

Fax: (0086)027-87800889 www.fn-test.com



Immunohistochemistry of paraffin-embedded human kidney using FNab01749(CLEC18A antibody) at dilution of 1:50



HeLa cells were subjected to SDS PAGE followed by western blot with FNab01749(CLEC18A antibody) at dilution of 1:500