

anti- CLCA2 antibody

Product Information

| | |
|---------------|---|
| Catalog No.: | FNab01742 |
| Size: | 100µg |
| Form: | liquid |
| Purification: | Immunogen affinity purified |
| Purity: | ≥95% as determined by SDS-PAGE |
| Host: | Rabbit |
| Clonality: | polyclonal |
| Clone ID: | None |
| IsoType: | IgG |
| Storage: | PBS with 0.02% sodium azide and 50% glycerol pH 7.3, -20°C for 12 months (Avoid repeated freeze / thaw cycles.) |

Background

Plays a role in modulating chloride current across the plasma membrane in a calcium-dependent manner, and cell adhesion. Involved in basal cell adhesion and/or stratification of squamous epithelia. May act as a tumor suppressor in breast and colorectal cancer. Plays a key role for cell adhesion in the beginning stages of lung metastasis via the binding to ITGB4.

Immunogen information

| | |
|--------------|------------------------------|
| Immunogen: | chloride channel accessory 2 |
| Synonyms: | CACC3 |
| Observed MW: | 141 kDa, 35-40 kDa |
| UniprotID : | Q9UQC9 |

Application

| | |
|-----------------------|-----------------------------------|
| Reactivity: | Human, Mouse |
| Tested Application: | ELISA, WB, IHC |
| Recommended dilution: | WB: 1:500-1:2000; IHC: 1:20-1:200 |

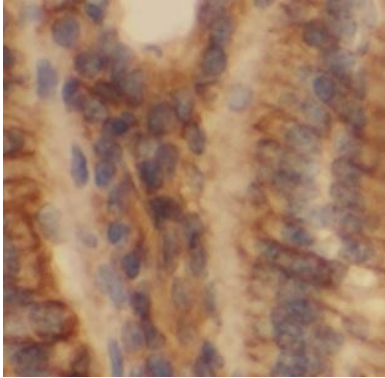
Wuhan Fine Biotech Co., Ltd.

B9 Bld, High-Tech Medical Devices Park, No. 818 Gaoxin Ave. East Lake High-Tech Development Zone. Wuhan, Hubei, China (430206)

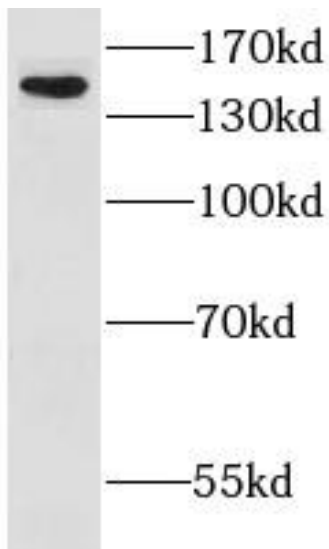
Tel : (0086)027-87384275

Fax: (0086)027-87800889 www.fn-test.com

Image:



Immunohistochemistry of paraffin-embedded human colon tissue slide using FNab01742 (CLCA2 Antibody) at dilution of 1:50



mouse lung tissue were subjected to SDS PAGE followed by western blot with FNab01742 (CLCA2 antibody) at dilution of 1:300

Wuhan Fine Biotech Co., Ltd.

B9 Bld, High-Tech Medical Devices Park, No. 818 GaoxinAve. East Lake High-Tech Development Zone. Wuhan, Hubei, China (430206)

Tel : (0086)027-87384275

Fax: (0086)027-87800889 www.fn-test.com