

anti- Choline kinase alpha-Specific antibody

Product Information

Catalog No.:	FNab01666
Size:	100µg
Form:	liquid
Purification:	Immunogen affinity purified
Purity:	≥95% as determined by SDS-PAGE
Host:	Rabbit
Clonality:	polyclonal
Clone ID:	None
IsoType:	IgG
Storage:	PBS with 0.02% sodium azide and 50% glycerol pH 7.3, -20°C for 12 months (Avoid repeated freeze / thaw cycles.)

Background

CHKA(Choline kinase alpha) is also named as CHK, CKI, EK(Ethanolamine kinase) and belongs to the choline/ethanolamine kinase family. Choline kinase(ATP:choline phosphotransferase) is a cytosolic enzyme that catalyzes the committed step in the synthesis of PC by the CDP-choline pathway. The enzyme catalyzes the phosphorylation of choline with ATP to form phosphocholine and ADP(PMID:9506987). It has 2 isoforms produced by alternative splicing with the molecular weight of 52 kDa and 50 kDa.

Immunogen information

Immunogen:	choline kinase alpha
Synonyms:	CHETK alpha, CHK, CHKA, Choline kinase alpha, CK, CKI, EK, Ethanolamine kinase
Observed MW:	50 kDa
UniprotID :	P35790

Application

Reactivity:	Human, Mouse, Rat
-------------	-------------------

Wuhan Fine Biotech Co., Ltd.

B9 Bld, High-Tech Medical Devices Park, No. 818 GaoxinAve.East Lake High-Tech Development Zone.Wuhan, Hubei, China(430206)

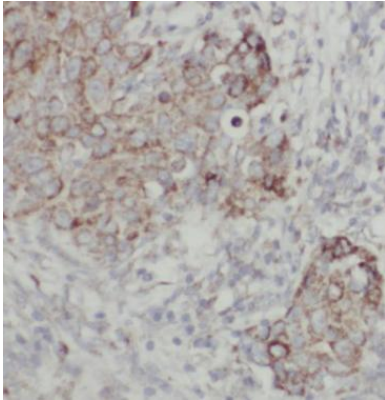
Tel :(0086)027-87384275

Fax: (0086)027-87800889 www.fn-test.com

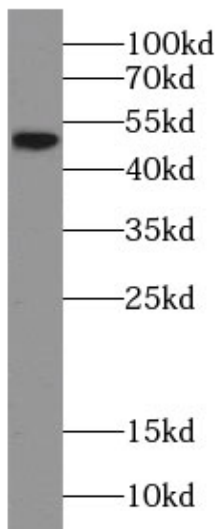
Tested Application: ELISA, WB, IF, IHC

Recommended dilution: WB: 1:200-1:2000; IF: 1:10-1:100; IHC: 1:20-1:200

Image:



Immunohistochemistry of paraffin-embedded human breast cancer tissue slide using FNab01666(CHKA antibody) at dilution of 1:50



COLO 320 cells were subjected to SDS PAGE followed by western blot with FNab01666(Choline kinase alpha-Specific antibody) at dilution of 1:300

Wuhan Fine Biotech Co., Ltd.

B9 Bld, High-Tech Medical Devices Park, No. 818 GaoxinAve. East Lake High-Tech Development Zone. Wuhan, Hubei, China(430206)

Tel : (0086)027-87384275

Fax: (0086)027-87800889 www.fn-test.com