

anti- CGNL1 antibody

Product Information

Catalog No.:	FNab01626
Size:	100µg
Form:	liquid
Purification:	Immunogen affinity purified
Purity:	≥95% as determined by SDS-PAGE
Host:	Rabbit
Clonality:	polyclonal
Clone ID:	None
IsoType:	IgG
Storage:	PBS with 0.02% sodium azide and 50% glycerol pH 7.3, -20°C for 12 months (Avoid repeated freeze / thaw cycles.)

Background

May be involved in anchoring the apical junctional complex, especially tight junctions, to actin-based cytoskeletons.

Immunogen information

Immunogen:	cingulin-like 1
Synonyms:	JACOP, KIAA1749
Observed MW:	149kd
UniprotID :	Q0VF96

Application

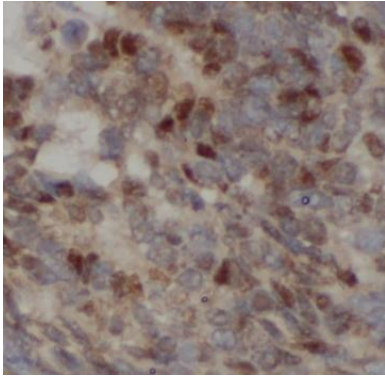
Reactivity:	Human, Mouse
Tested Application:	ELISA, WB, IHC
Recommended dilution:	WB: 1:1000-1:4000; IHC: 1:20-1:200
Image:	

Wuhan Fine Biotech Co., Ltd.

B9 Bld, High-Tech Medical Devices Park, No. 818 GaoxinAve. East Lake High-Tech Development Zone. Wuhan, Hubei, China(430206)

Tel : (0086)027-87384275

Fax: (0086)027-87800889 www.fn-test.com



Immunohistochemistry of paraffin-embedded human liver cancer tissue slide using FNab01626(CGNL1 Antibody) at dilution of 1:50



NIH/3T3 cells were subjected to SDS PAGE followed by western blot with FNab01626(CGNL1 antibody) at dilution of 1:2000