

## anti- CEP72 antibody

### Product Information

Catalog No.:	FNab01609
Size:	100µg
Form:	liquid
Purification:	Immunogen affinity purified
Purity:	≥95% as determined by SDS-PAGE
Host:	Rabbit
Clonality:	polyclonal
Clone ID:	None
IsoType:	IgG
Storage:	PBS with 0.02% sodium azide and 50% glycerol pH 7.3, -20°C for 12 months (Avoid repeated freeze / thaw cycles.)

### Background

Involved in the recruitment of key centrosomal proteins to the centrosome. Provides centrosomal microtubule-nucleation activity on the gamma-tubulin ring complexes(gamma-TuRCs) and has critical roles in forming a focused bipolar spindle, which is needed for proper tension generation between sister chromatids. Required for localization of KIZ, AKAP9 and gamma-tubulin ring complexes(gamma-TuRCs)(PubMed:19536135). Involved in centriole duplication. Required for CDK5RAP22, CEP152, WDR62 and CEP63 centrosomal localization and promotes the centrosomal localization of CDK2(PubMed:26297806).

### Immunogen information

Immunogen:	centrosomal protein 72kDa
Synonyms:	KIAA1519
Observed MW:	72 kDa
UniprotID :	Q9P209

### Application

Reactivity:	Human, Mouse
-------------	--------------

### Wuhan Fine Biotech Co., Ltd.

B9 Bld, High-Tech Medical Devices Park, No. 818 GaoxinAve.East Lake High-Tech Development Zone.Wuhan, Hubei, China(430206)

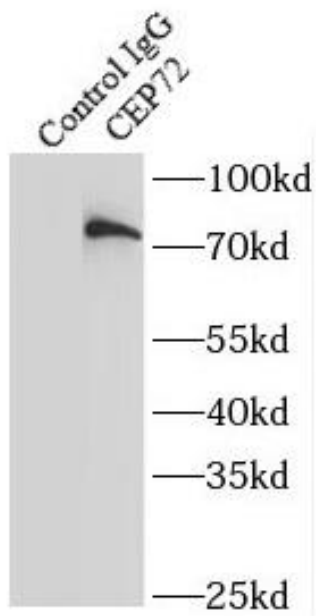
Tel :( 0086)027-87384275

Fax: (0086)027-87800889 [www.fn-test.com](http://www.fn-test.com)

Tested Application: ELISA, WB, IF, IP

Recommended dilution: WB: 1:500-1:2000; IP: 1:200-1:1000; IF: 1:20-1:200

Image:



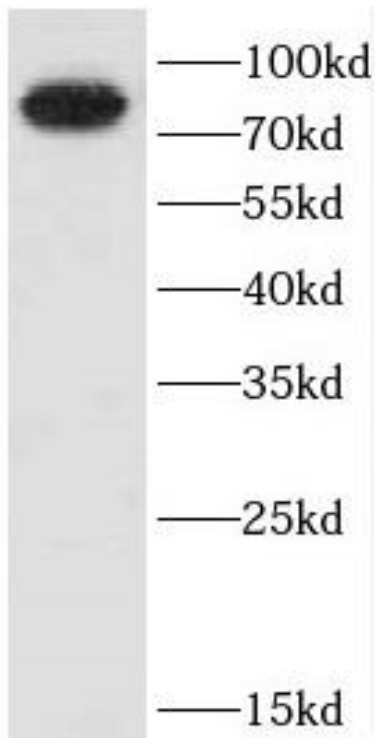
IP Result of anti-CEP72 (IP:FNab01609, 4ug;  
Detection:FNab01609 1:1000) with HeLa cells  
lysate 520ug.

**Wuhan Fine Biotech Co., Ltd.**

B9 Bld, High-Tech Medical Devices Park, No. 818 GaoxinAve.East Lake High-Tech Development Zone.Wuhan,  
Hubei, China(430206)

Tel :( 0086)027-87384275

Fax: (0086)027-87800889 [www.fn-test.com](http://www.fn-test.com)



HeLa cells were subjected to SDS PAGE followed by western blot with FNab01609(CEP72 antibody) at dilution of 1:1000