

anti- CDK1-Specific antibody

Product Information

Catalog No.:	FNab01552
Size:	100µg
Form:	liquid
Purification:	Immunogen affinity purified
Purity:	≥95% as determined by SDS-PAGE
Host:	Rabbit
Clonality:	polyclonal
Clone ID:	None
IsoType:	IgG
Storage:	PBS with 0.02% sodium azide and 50% glycerol pH 7.3, -20°C for 12 months (Avoid repeated freeze / thaw cycles.)

Background

CDK1, also named as CDC2, belongs to the protein kinase superfamily, CMGC Ser/Thr protein kinase family and CDC2/CDKX subfamily. CDC2 plays a key role in the control of the eukaryotic cell cycle. It is required in higher cells for entry into S-phase and mitosis. The antibody is specific to the 2 isoforms of CDC2.

Immunogen information

Immunogen:	cell division cycle 2, G1 to S and G2 to M
Synonyms:	CDC2, CDC28A, CDK1, Cell division protein kinase 1, Cyclin dependent kinase 1, DKFZp686L20222, p34 protein kinase
Observed MW:	34 kDa
Uniprot ID :	P06493

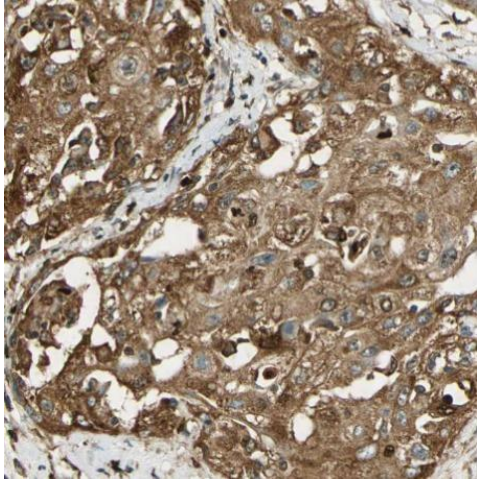
Application

Reactivity:	Human, Mouse, Rat
Tested Application:	ELISA, WB, IHC, IP
Recommended dilution:	WB: 1:200-1:1000; IHC: 1:100-1:400; IF: 1:20-1:200

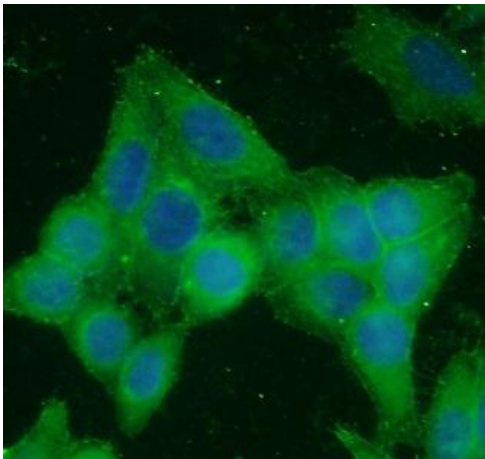
Wuhan Fine Biotech Co., Ltd.

B9 Bld, High-Tech Medical Devices Park, No. 818 Gaoxin Ave. East Lake High-Tech Development Zone. Wuhan, Hubei, China(430206)

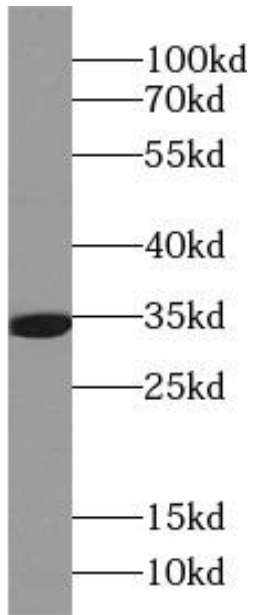
Image:



Immunohistochemistry of paraffin-embedded human cervical cancer tissue slide using FNab01552(CDC2-Specific Antibody) at dilution of 1:200



Immunofluorescent analysis of HeLa cells using FNab01552 (CDC2-Specific Antibody) at dilution of 1:50 and Alexa Fluor 488-conjugated AffiniPure Goat Anti-Rabbit IgG(H+L)



MCF7 were subjected to SDS PAGE followed by western blot with FNab01552(CDC2-Specific antibody) at dilution of 1:100