

anti- CDC6 antibody

Product Information

Catalog No.:	FNab01537
Size:	100µg
Form:	liquid
Purification:	Protein A+G purification
Purity:	≥95% as determined by SDS-PAGE
Host:	Mouse
Clonality:	monoclonal
Clone ID:	4B1
IsoType:	IgG2a
Storage:	PBS with 0.02% sodium azide and 50% glycerol pH 7.3, -20°C for 12 months (Avoid repeated freeze / thaw cycles.)

Background

Involved in the initiation of DNA replication. Also participates in checkpoint controls that ensure DNA replication is completed before mitosis is initiated.

Immunogen information

Immunogen:	cell division cycle 6 homolog(<i>S. cerevisiae</i>)
Synonyms:	Cdc18 related protein, CDC18L, CDC6, CDC6 related protein, HsCDC18, HsCDC6, p62(cdc6)
Observed MW:	63 kDa
Uniprot ID :	Q99741

Application

Reactivity:	Human, Mouse, Rat
Tested Application:	ELISA, WB, IF
Recommended dilution:	WB: 1:500-1:1000; IF: 1:20-1:200
Image:	

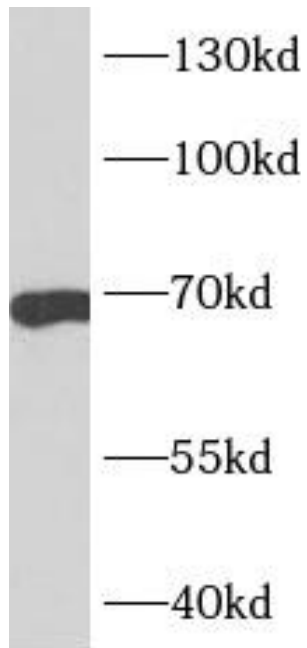
Wuhan Fine Biotech Co., Ltd.

B9 Bld, High-Tech Medical Devices Park, No. 818 Gaoxin Ave. East Lake High-Tech Development Zone. Wuhan, Hubei, China(430206)

Tel : (0086)027-87384275

Fax: (0086)027-87800889

www.fn-test.com



HeLa cells were subjected to SDS PAGE followed by western blot with FNab01537(CDC6 antibody) at dilution of 1:1000