

## anti- CDC6 antibody

### Product Information

Catalog No.:	FNab01536
Size:	100µg
Form:	liquid
Purification:	Immunogen affinity purified
Purity:	≥95% as determined by SDS-PAGE
Host:	Rabbit
Clonality:	polyclonal
Clone ID:	None
IsoType:	IgG
Storage:	PBS with 0.02% sodium azide and 50% glycerol pH 7.3, -20°C for 12 months (Avoid repeated freeze / thaw cycles.)

### Background

Involved in the initiation of DNA replication. Also participates in checkpoint controls that ensure DNA replication is completed before mitosis is initiated.

### Immunogen information

Immunogen:	cell division cycle 6 homolog( <i>S. cerevisiae</i> )
Synonyms:	Cdc18 related protein, CDC18L, CDC6, CDC6 related protein, HsCDC18, HsCDC6, p62(cdc6)
Observed MW:	63 kDa
UniprotID :	Q99741

### Application

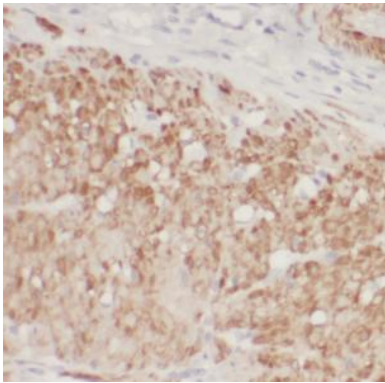
Reactivity:	Human, Mouse, Rat
Tested Application:	ELISA, WB, IHC, IF
Recommended dilution:	WB: 1:500-1:2000; IHC: 1:20-1:200; IF: 1:20-1:200
Image:	

### Wuhan Fine Biotech Co., Ltd.

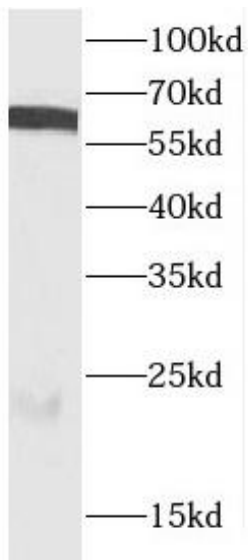
B9 Bld, High-Tech Medical Devices Park, No. 818 GaoxinAve. East Lake High-Tech Development Zone. Wuhan, Hubei, China(430206)

Tel : (0086)027-87384275

Fax: (0086)027-87800889 [www.fn-test.com](http://www.fn-test.com)



Immunohistochemistry of paraffin-embedded human colon cancer using FNab01536(CDC6 antibody) at dilution of 1:50



HeLa cells were subjected to SDS PAGE followed by western blot with FNab01536(CDC6 antibody) at dilution of 1:400