

anti- CDC37L1 antibody

Product Information

Catalog No.:	FNab01529
Size:	100µg
Form:	liquid
Purification:	Immunogen affinity purified
Purity:	≥95% as determined by SDS-PAGE
Host:	Rabbit
Clonality:	polyclonal
Clone ID:	None
IsoType:	IgG
Storage:	PBS with 0.02% sodium azide and 50% glycerol pH 7.3, -20°C for 12 months (Avoid repeated freeze / thaw cycles.)

Background

Co-chaperone that binds to numerous proteins and promotes their interaction with Hsp70 and Hsp90.

Immunogen information

Immunogen:	cell division cycle 37 homolog(<i>S. cerevisiae</i>)-like 1
Synonyms:	CDC37B, HARC
Observed MW:	39kd
UniprotID :	Q7L3B6

Application

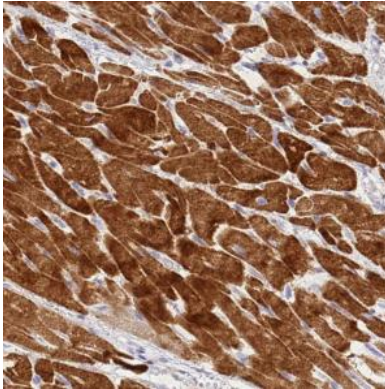
Reactivity:	Human
Tested Application:	ELISA, WB, IHC
Recommended dilution:	WB: 1:500-1:2000; IHC: 1:20-1:200
Image:	

Wuhan Fine Biotech Co., Ltd.

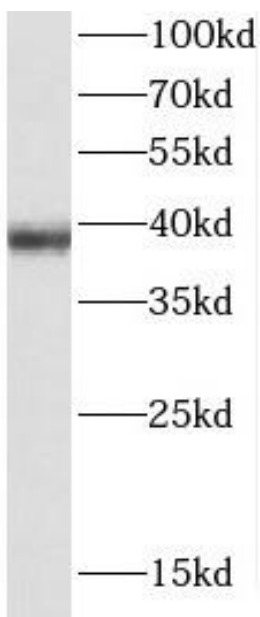
B9 Bld, High-Tech Medical Devices Park, No. 818 GaoxinAve. East Lake High-Tech Development Zone. Wuhan, Hubei, China(430206)

Tel : (0086)027-87384275

Fax: (0086)027-87800889 www.fn-test.com



Immunohistochemistry of paraffin-embedded human heart using FNab01529(CDC37L1 antibody) at dilution of 1:50



human kidney tissue were subjected to SDS PAGE followed by western blot with FNab01529(CDC37L1 antibody) at dilution of 1:500