

anti- CDC25C antibody

Product Information

Catalog No.:	FNab01523
Size:	100µg
Form:	liquid
Purification:	Immunogen affinity purified
Purity:	≥95% as determined by SDS-PAGE
Host:	Rabbit
Clonality:	polyclonal
Clone ID:	None
IsoType:	IgG
Storage:	PBS with 0.02% sodium azide and 50% glycerol pH 7.3, -20°C for 12 months (Avoid repeated freeze / thaw cycles.)

Background

Functions as a dosage-dependent inducer in mitotic control. Tyrosine protein phosphatase required for progression of the cell cycle. When phosphorylated, highly effective in activating G2 cells into prophase. Directly dephosphorylates CDK1 and activates its kinase activity.

Immunogen information

Immunogen:	cell division cycle 25 homolog C(S. pombe)
Synonyms:	None
Observed MW:	53 kDa
Uniprot ID :	P30307

Application

Reactivity:	Human
Tested Application:	ELISA, WB, IP
Recommended dilution:	WB: 1:500-1:1000; IP: 1:200-1:1000
Image:	

Wuhan Fine Biotech Co., Ltd.

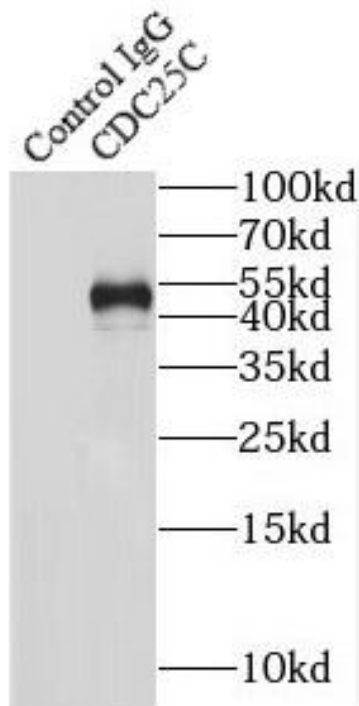
B9 Bld, High-Tech Medical Devices Park, No. 818 Gaoxin Ave. East Lake High-Tech Development Zone. Wuhan, Hubei, China(430206)

Tel : (0086)027-87384275

Fax: (0086)027-87800889

www.fn-test.com

IP Result of anti-CDC25C (IP:FNab01523, 4ug;
Detection:FNab01523 1:1000) with K-562 cells
lysate 3600ug.



HeLa cells were subjected to SDS PAGE followed
by western blot withFNab01523(CDC25C
antibody) at dilution of 1:4000

