

anti- CAP1 antibody

Product Information

Catalog No.:	FNab01246
Size:	100µg
Form:	liquid
Purification:	Immunogen affinity purified
Purity:	≥95% as determined by SDS-PAGE
Host:	Rabbit
Clonality:	polyclonal
Clone ID:	None
IsoType:	IgG
Storage:	PBS with 0.02% sodium azide and 50% glycerol pH 7.3, -20°C for 12 months (Avoid repeated freeze / thaw cycles.)

Background

Directly regulates filament dynamics and has been implicated in a number of complex developmental and morphological processes, including mRNA localization and the establishment of cell polarity.

Immunogen information

Immunogen:	CAP, adenylate cyclase-associated protein 1
Synonyms:	Adenylyl cyclase associated protein 1, CAP, CAP 1, CAP1, CAP1 PEN
Observed MW:	52 kDa
Uniprot ID :	Q01518

Application

Reactivity:	Human, Mouse, Rat
Tested Application:	ELISA, WB, IHC, FC, IP
Recommended dilution:	WB: 1:500-1:1000; IP: 1:500-1:1000; IHC: 1:20-1:200
Image:	

1

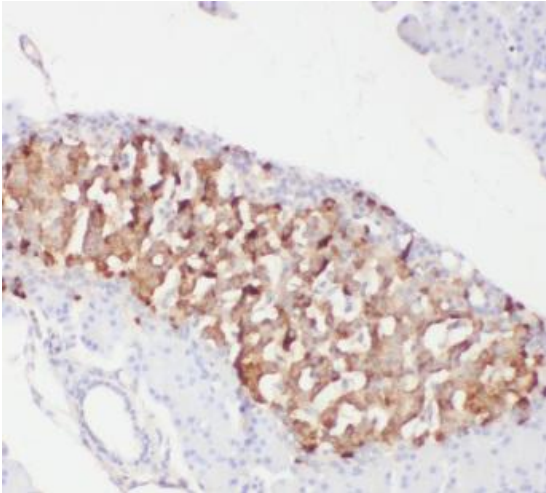
Wuhan Fine Biotech Co., Ltd.

B9 Bld, High-Tech Medical Devices Park, No. 818 Gaoxin Ave. East Lake High-Tech Development Zone. Wuhan, Hubei, China(430206)

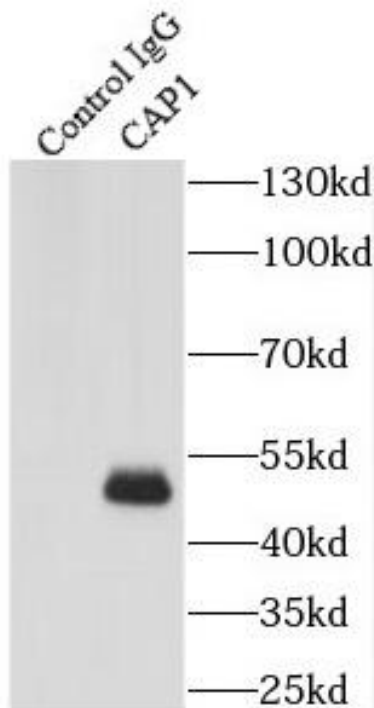
Tel : (0086)027-87384275

Fax: (0086)027-87800889

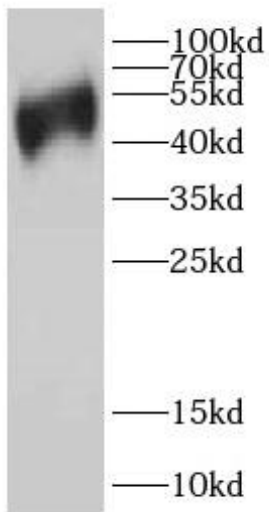
www.fn-test.com



Immunohistochemistry of paraffin-embedded human pancreas cancer tissue slide using FNab01246(CAP1 Antibody) at dilution of 1:50



IP Result of anti-CAP1 (IP:FNab01246, 3ug; Detection:FNab01246 1:500) with A431 cells lysate 1520ug.



mouse skin tissue were subjected to SDS PAGE followed by western blot with FNab01246(CAP1 antibody) at dilution of 1:500