

anti- CALML6 antibody

Product Information

Catalog No.:	FNab01207
Size:	100µg
Form:	liquid
Purification:	Immunogen affinity purified
Purity:	≥95% as determined by SDS-PAGE
Host:	Rabbit
Clonality:	polyclonal
Clone ID:	None
IsoType:	IgG
Storage:	PBS with 0.02% sodium azide and 50% glycerol pH 7.3, -20°C for 12 months (Avoid repeated freeze / thaw cycles.)

Immunogen information

Immunogen:	calmodulin-like 6
Synonyms:	CAGLP, Calglandulin like protein, CALGP, CALML6, calmodulin like 6, Calmodulin like protein 6
Observed MW:	20-25 kDa
Uniprot ID :	Q8TD86

Application

Reactivity:	Human
Tested Application:	ELISA, WB, IHC
Recommended dilution:	WB: 1:500 - 1:2000; IHC: 1:50 - 1:500
Image:	

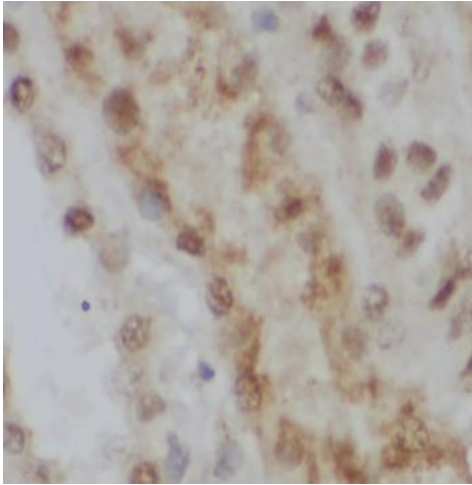
Wuhan Fine Biotech Co., Ltd.

B9 Bld, High-Tech Medical Devices Park, No. 818 Gaoxin Ave. East Lake High-Tech Development Zone. Wuhan, Hubei, China(430206)

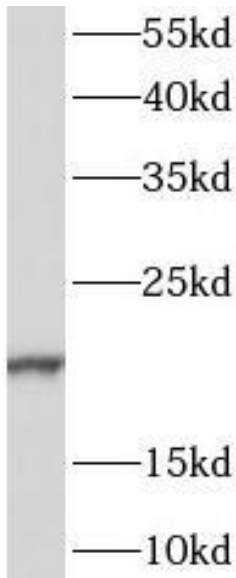
Tel : (0086)027-87384275

Fax: (0086)027-87800889

www.fn-test.com



Immunohistochemistry of paraffin-embedded human kidney using FNab01207(CALML6 antibody) at dilution of 1:100



human heart tissue were subjected to SDS PAGE followed by western blot with FNab01207(CALML6 antibody) at dilution of 1:500