

anti- ATPAF1 antibody

Product Information

Catalog No.:	FNab00730
Size:	100µg
Form:	liquid
Purification:	Immunogen affinity purified
Purity:	≥95% as determined by SDS-PAGE
Host:	Rabbit
Clonality:	polyclonal
Clone ID:	None
IsoType:	IgG
Storage:	PBS with 0.02% sodium azide and 50% glycerol pH 7.3, -20°C for 12 months (Avoid repeated freeze / thaw cycles.)

Background

May play an essential role for the assembly of the mitochondrial F1-F0 complex.

Immunogen information

Immunogen:	ATP synthase mitochondrial F1 complex assembly factor 1
Synonyms:	ATP11, ATP11 homolog, ATP11p, ATPAF1
Observed MW:	36kd
Uniprot ID :	Q5TC12

Application

Reactivity:	Human, Mouse, Rat
Tested Application:	ELISA, WB
Recommended dilution:WB:	1:500-1:2000
Image:	

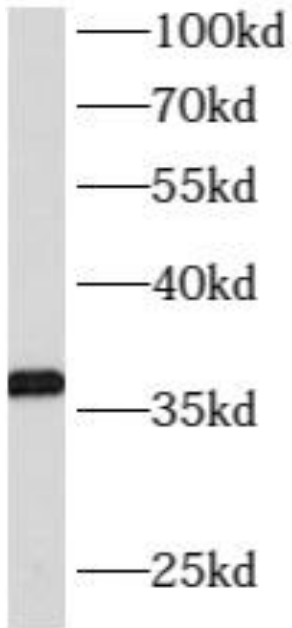
Wuhan Fine Biotech Co., Ltd.

B9 Bld, High-Tech Medical Devices Park, No. 818 Gaoxin Ave. East Lake High-Tech Development Zone. Wuhan, Hubei, China(430206)

Tel : (0086)027-87384275

Fax: (0086)027-87800889

www.fn-test.com



mouse liver tissue were subjected to SDS PAGE followed by western blot with FNab00730(ATPAF1 antibody) at dilution of 1:500