

## anti- ATF4 antibody

### Product Information

Catalog No.:	FNab00662
Size:	100µg
Form:	liquid
Purification:	Immunogen affinity purified
Purity:	≥95% as determined by SDS-PAGE
Host:	Rabbit
Clonality:	polyclonal
Clone ID:	None
IsoType:	IgG
Storage:	PBS with 0.02% sodium azide and 50% glycerol pH 7.3, -20°C for 12 months (Avoid repeated freeze / thaw cycles.)

### Background

Transcriptional activator. Binds the cAMP response element(CRE)(consensus: 5'-GTGACGT[AC][AG]-3'), a sequence present in many viral and cellular promoters. Cooperates with FOXO1 in osteoblasts to regulate glucose homeostasis through suppression of beta-cell production and decrease in insulin production(By similarity). It binds to a Tax-responsive enhancer element in the long terminal repeat of HTLV-I. Regulates the induction of DDIT3/CHOP and asparagine synthetase(ASNS) in response to endoplasmic reticulum(ER) stress. In concert with DDIT3/CHOP, activates the transcription of TRIB3 and promotes ER stress-induced neuronal apoptosis by regulating the transcriptional induction of BBC3/PUMA. Activates transcription of SIRT4. Regulates the circadian expression of the core clock component PER2 and the serotonin transporter SLC6A4. Binds in a circadian time-dependent manner to the cAMP response elements(CRE) in the SLC6A4 and PER2 promoters and periodically activates the transcription of these genes. During ER stress response, activates the transcription of NLRP1, possibly in concert with other factors(PubMed:26086088).

### Immunogen information

Immunogen:	activating transcription factor 4(tax-responsive enhancer element B67)
Synonyms:	ATF4, CREB 2, CREB2, DNA binding protein TAXREB67, TAXREB67, TXREB

### Wuhan Fine Biotech Co., Ltd.

B9 Bld, High-Tech Medical Devices Park, No. 818 Gaoxin Ave. East Lake High-Tech Development Zone. Wuhan, Hubei, China(430206)

Tel : (0086)027-87384275

Fax: (0086)027-87800889

[www.fn-test.com](http://www.fn-test.com)

Observed MW: 50-58 kDa, 35-38 kDa

Uniprot ID : P18848

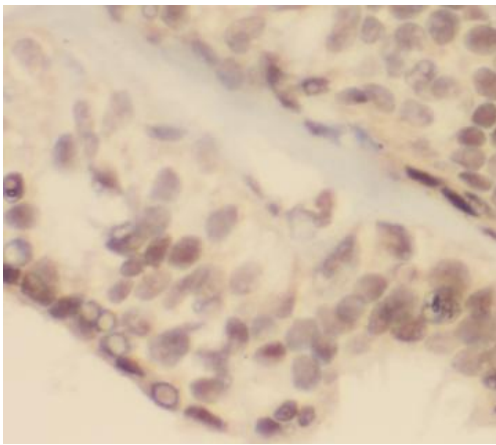
### Application

Reactivity: Human, Mouse, Rat

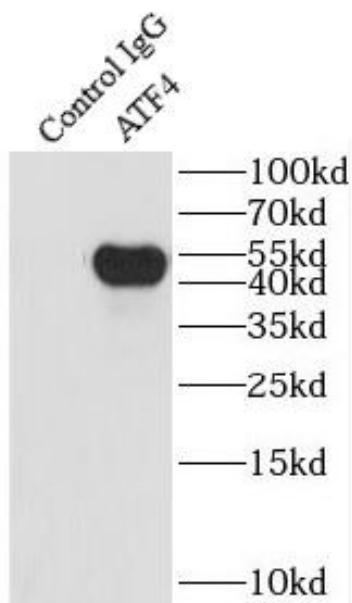
Tested Application: ELISA, WB, IHC, IP, FC

Recommended dilution: WB: 1:500-1:1000; IP: 1:200-1:1000; IHC: 1:50-1:500; IF: 1:50-1:500

Image:



Immunohistochemistry of paraffin-embedded human breast cancer using FNab00662(ATF4 antibody) at dilution of 1:100



IP Result of anti-ATF4 (IP:FNab00662, 3ug; Detection:FNab00662 1:400) with HEK-293 cells lysate 6000ug.

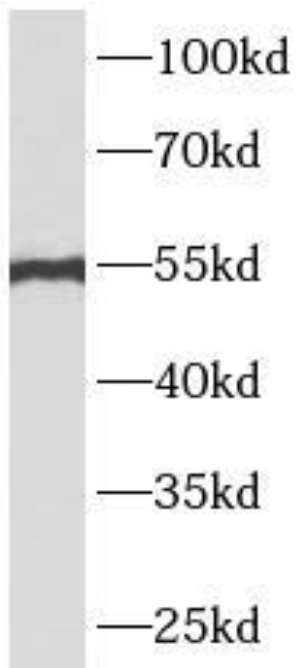
### Wuhan Fine Biotech Co., Ltd.

B9 Bld, High-Tech Medical Devices Park, No. 818 Gaoxin Ave. East Lake High-Tech Development Zone. Wuhan, Hubei, China(430206)

Tel : (0086)027-87384275

Fax: (0086)027-87800889

[www.fn-test.com](http://www.fn-test.com)



A431 cells were subjected to SDS PAGE followed by western blot with FNab00662(ATF4 antibody) at dilution of 1:500