

anti- Amylase, alpha antibody

Product Information

Catalog No.:	FNab00383
Size:	100µg
Form:	liquid
Purification:	Protein A+G purification
Purity:	≥95% as determined by SDS-PAGE
Host:	Mouse
Clonality:	monoclonal
Clone ID:	1C7
IsoType:	IgG2b
Storage:	PBS with 0.02% sodium azide and 50% glycerol pH 7.3, -20°C for 12 months (Avoid repeated freeze / thaw cycles.)

Background

The complete human amylase gene contains five intact genes: two pancreatic genes(AMY2A and AMY2B) and three salivary genes(AMY1A, AMY1B, and AMY1C). AMY2A(Pancreatic alpha-amylase)is also named as PA and is a 56 kDa protein consisting of 496 amino acids in a single polypeptide chain, folded into three domains(PMID:10657258).AMY2A and AMY2B transcripts are present in the human pancreas but not in the parotid salivary gland, while AMY1 transcripts are present in the parotid gland but not in the pancreas(PMID:1692956). This antibody can recognize both AMY1 and AMY2.

Immunogen information

Immunogen:	amylase, alpha 2A(pancreatic)
Synonyms:	AMY2A, Amylase, alpha, Pancreatic alpha amylase
Observed MW:	58 kDa
Uniprot ID :	P04746

Application

Reactivity:	Human, Rat, Pig
-------------	-----------------

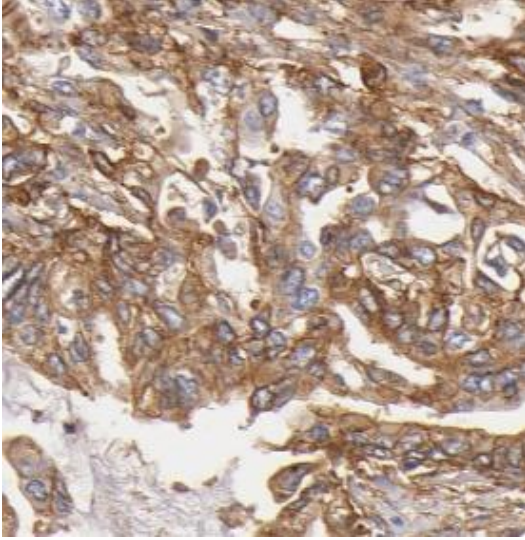
Wuhan Fine Biotech Co., Ltd.

B9 Bld, High-Tech Medical Devices Park, No. 818 Gaoxin Ave. East Lake High-Tech Development Zone. Wuhan, Hubei, China(430206)

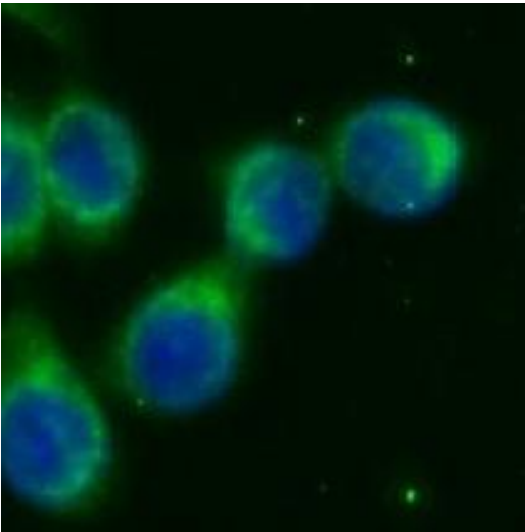
Tested Application: ELISA, WB, IHC, IF

Recommended dilution: WB: 1:1000-1:4000; IHC: 1:20-1:200; IF: 1:10-1:100

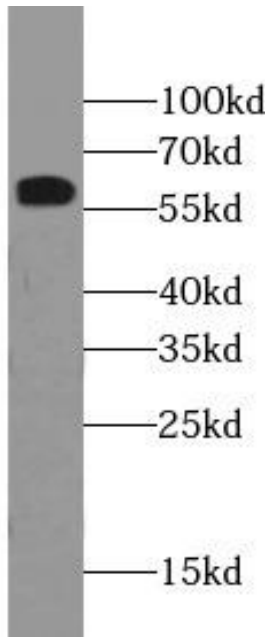
Image:



Immunohistochemistry of paraffin-embedded human pancreas cancer tissue slide using FNab00383(AMY2A Antibody) at dilution of 1:50



Immunofluorescent analysis of BxPC-3 cells using FNab00383 (Amylase, alpha antibody) at dilution of 1:25 and Alexa Fluor 488-conjugated Goat Anti-Mouse IgG(H+L)



human saliva were subjected to SDS PAGE followed by western blot with FNab00383(AMY2A antibody) at dilution of 1:2000