

## anti- GIP antibody

### Product Information

Catalog No.:	FNab09842
Size:	100 $\mu$ g
Form:	liquid
Purification:	Immunogen affinity purified
Purity:	$\geq$ 95% as determined by SDS-PAGE
Host:	Rabbit
IsoType:	IgG
Storage:	PBS with 0.02% sodium azide and 50% glycerol pH 7.3 , -20 $^{\circ}$ C for 24 months (Avoid repeated freeze / thaw cycles.)

### Background

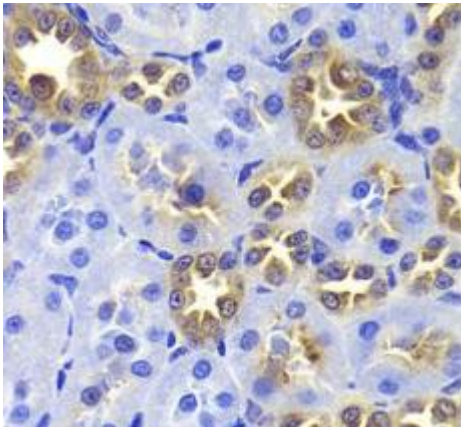
This gene encodes an incretin hormone and belongs to the glucagon superfamily. The encoded protein is important in maintaining glucose homeostasis as it is a potent stimulator of insulin secretion from pancreatic beta-cells following food ingestion and nutrient absorption. This gene stimulates insulin secretion via its G protein-coupled receptor activation of adenylyl cyclase and other signal transduction pathways. It is a relatively poor inhibitor of gastric acid secretion.

### Immunogen information

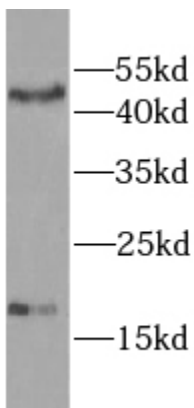
Immunogen:	gastric inhibitory polypeptide
Synonyms:	gastric inhibitory polypeptide, GIP
Calculated MW:	17 kDa
Uniprot ID :	P09681

### Application

Specificity:	Human, Mouse, Rat; other species are not tested. Please decide the specificity by homology
Tested Application:	ELISA, WB, IHC
Recommended dilution:	WB: 1:500 - 1:2000 IHC: 1:50 - 1:200
Image:	



Immunohistochemistry of paraffin-embedded rat kidney tissue slide using FNab09842( GIP antibody) at dilution of 1:100



HepG2 cells were subjected to SDS PAGE followed by western blot with FNab09842( GIP Antibody) at dilution of 1:1000